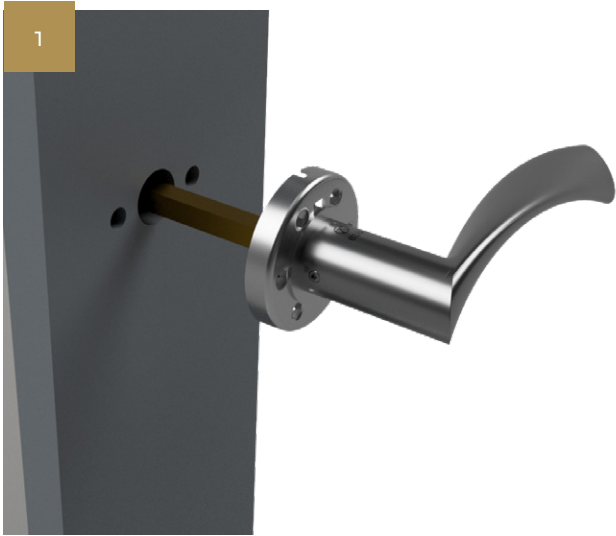


FITTING GUIDE

WH900C WING LEVER ON ROUND ROSE

LIT-FG-FX-WH900



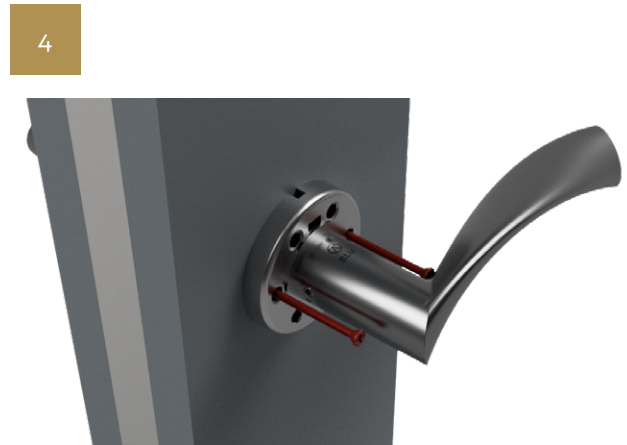
Push the spindle firmly into the internal lever, make sure the grub screw in the lever is wound out to let the spindle pass then slide the spindle through the door lock until the lever is against the door stile.



Take the external lever and once again slide this over the spindle, again making sure the grub screw is wound out until the lever is against the door stile.



Take the 2 fixing studs (shown in red above) and push them through the 2 outer holes on the external lever, firmly push them in so they are sitting flush with the backplate.



Take the 2 fixing screws and push them through the 2 outer holes on the internal lever, slide them in so they locate with the fixing studs then tighten with a hand screwdriver, keeping pressure on the studs.

FITTING GUIDE

WH900C WING LEVER ON ROUND ROSE

LIT-FG-FX-WH900



Finally tighten the grub screws on both levers with an Allen key to secure in place, the handles are now successfully fitted.

