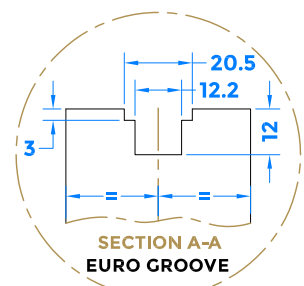
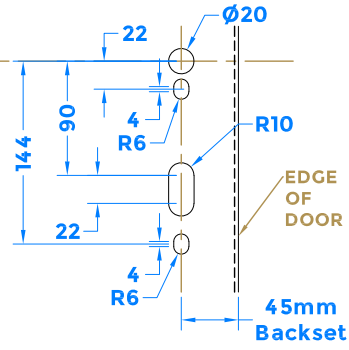
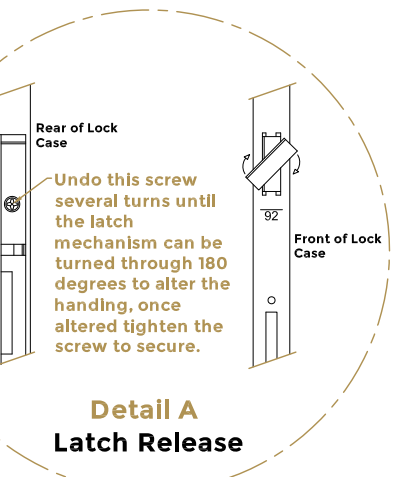
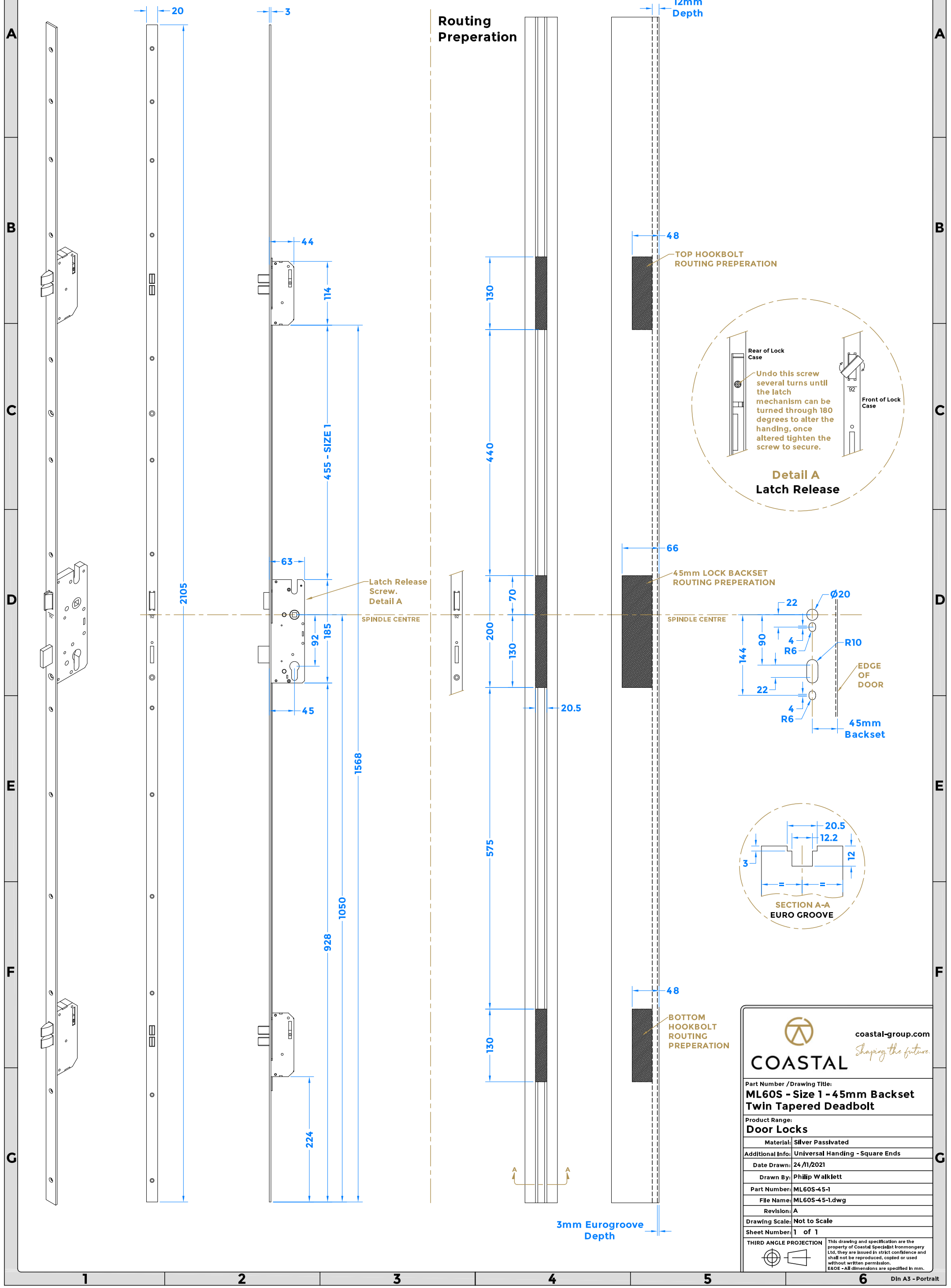


Drawing Revision History		
Revision	Description/Change	Date
A	Release	24/11/2021

**Universal Handing.**



**COASTAL** *Shaping the future* [coastal-group.com](http://coastal-group.com)

Part Number / Drawing Title:  
**ML60S - Size 1 - 45mm Backset Twin Tapered Deadbolt**

Product Range:  
**Door Locks**

Material: Silver Passivated

Additional Info: Universal Handing - Square Ends

Date Drawn: 24/11/2021

Drawn By: Philip Walklett

Part Number: ML60S-45-1

File Name: ML60S-45-1.dwg

Revision: A

Drawing Scale: Not to Scale

Sheet Number: 1 of 1

**THIRD ANGLE PROJECTION**

This drawing and specification are the property of Coastal Specialist Ironmongery Ltd. they are issued in strict confidence and shall not be reproduced, copied or used without written permission.  
E&OE - All dimensions are specified in mm.