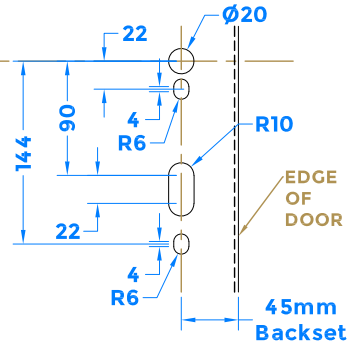
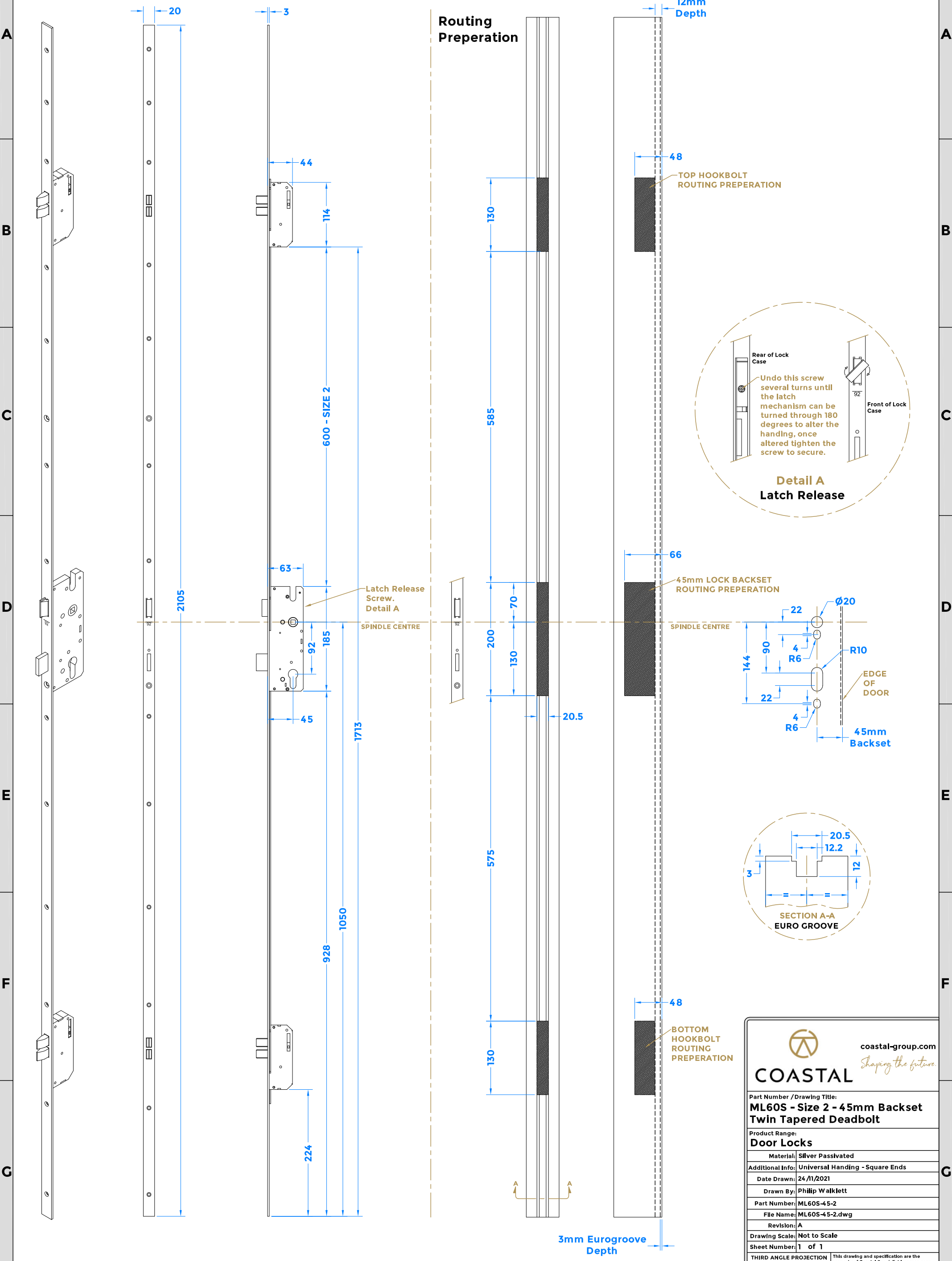


Drawing Revision History		
Revision	Description/Change	Date
A	Release	24/11/2021

Universal Handing.

Routing Preparation



coastal-group.com
Shaping the future

COASTAL

Part Number / Drawing Title:
**ML60S - Size 2 - 45mm Backset
Twin Tapered Deadbolt**

Product Range:
Door Locks

Material: Silver Passivated

Additional Info: Universal Handing - Square Ends

Date Drawn: 24/11/2021

Drawn By: Philip Walklett

Part Number: ML60S-45-2

File Name: ML60S-45-2.dwg

Revision: A

Drawing Scale: Not to Scale

Sheet Number: 1 of 1

THIRD ANGLE PROJECTION

This drawing and specification are the property of Coastal Specialist Ironmongery Ltd. they are issued in strict confidence and shall not be reproduced, copied or used without written permission.
E&OE - All dimensions are specified in mm.