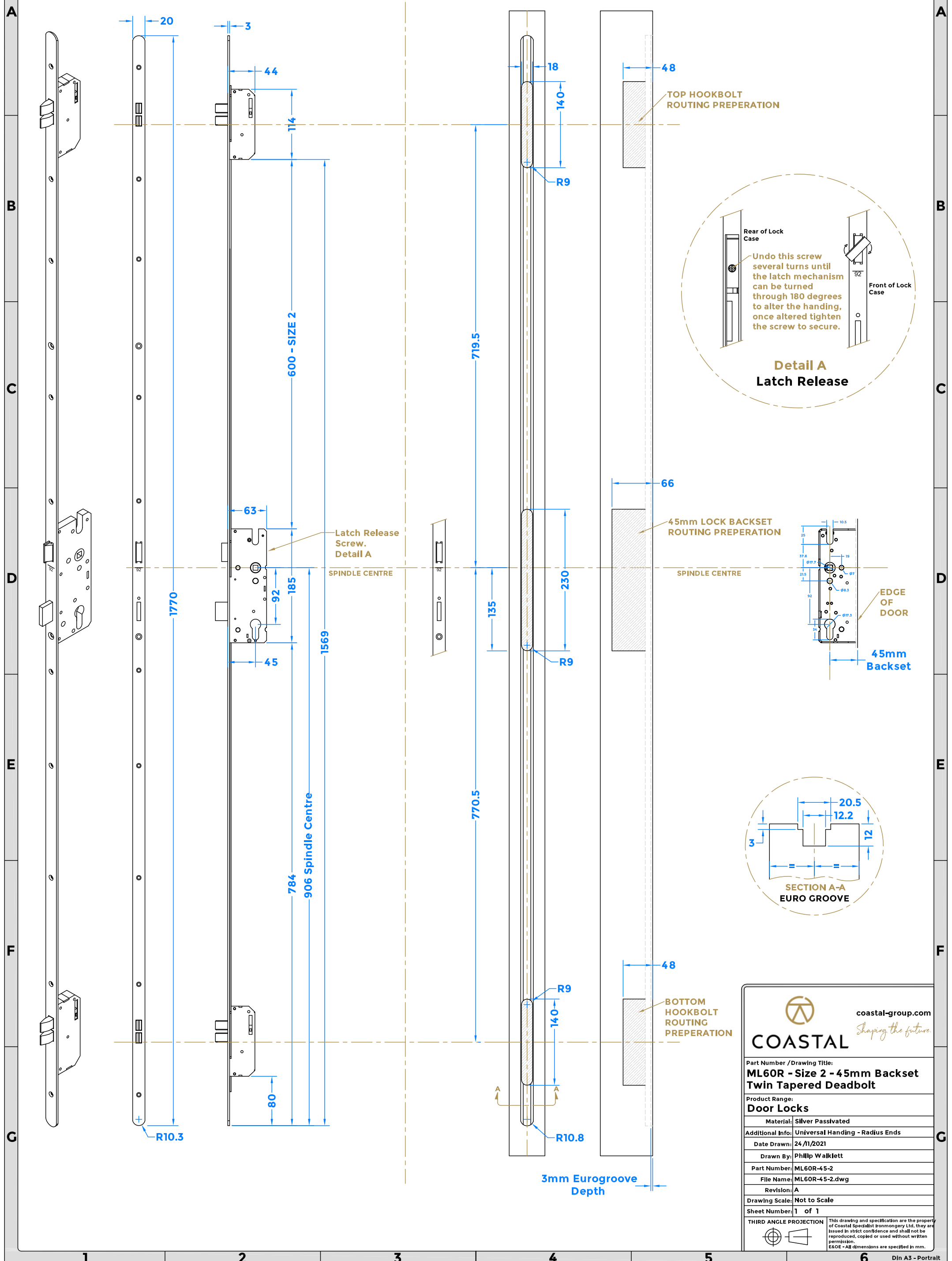


Universal Handing.

Routing Preparation

Drawing Revision History		
Revision	Description/Change	Date
A	Release	24/11/21
B-RP	Amend Milling Details	10/03/26



Detail A Latch Release

Rear of Lock Case

Front of Lock Case

Undo this screw several turns until the latch mechanism can be turned through 180 degrees to alter the handing, once altered tighten the screw to secure.

45mm LOCK BACKSET ROUTING PREPARATION

EDGE OF DOOR

45mm Backset

SECTION A-A EURO GROOVE

20.5

12.2

12

3

COASTAL *Shaping the future.*

coastal-group.com

Part Number / Drawing Title:
ML60R - Size 2 - 45mm Backset Twin Tapered Deadbolt

Product Range:
Door Locks

Material: Silver Passivated

Additional Info: Universal Handing - Radius Ends

Date Drawn: 24/11/2021

Drawn By: Philip Walklett

Part Number: ML60R-45-2

File Name: ML60R-45-2.dwg

Revision: A

Drawing Scale: Not to Scale

Sheet Number: 1 of 1

THIRD ANGLE PROJECTION

This drawing and specification are the property of Coastal Specialist Ironmongery Ltd, they are issued in strict confidence and shall not be reproduced, copied or used without written permission.
E&OE - All dimensions are specified in mm.