

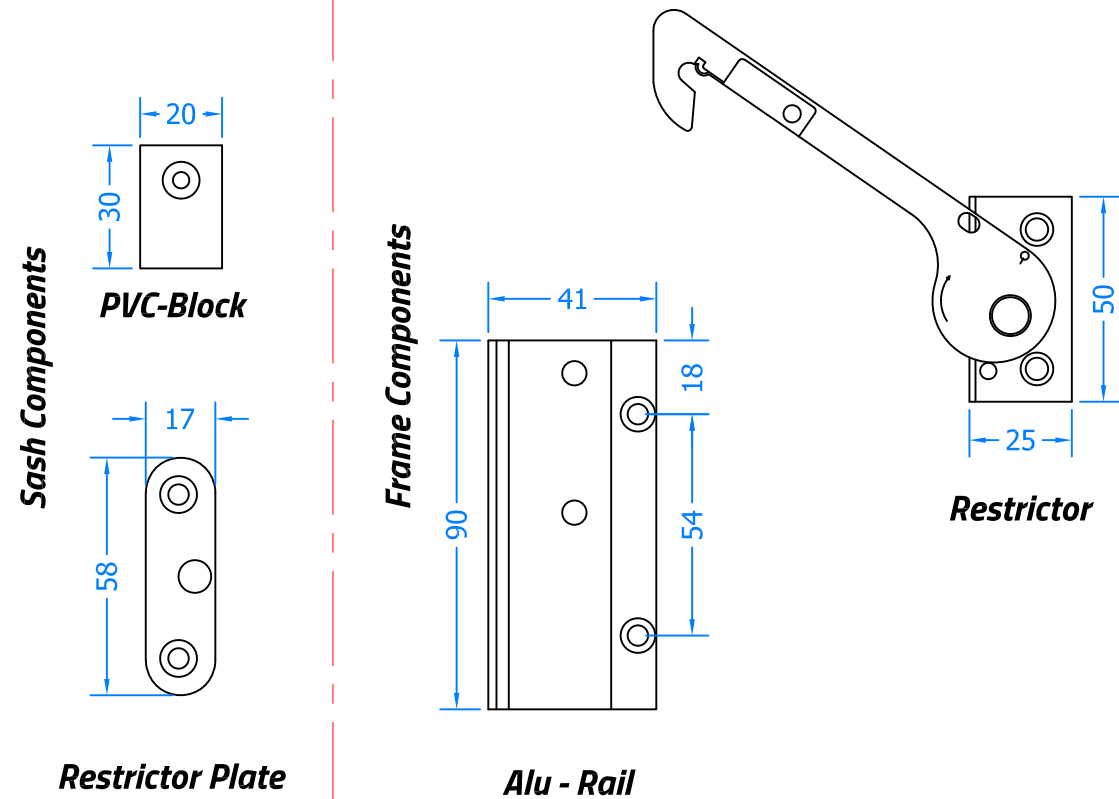
REVISION HISTORY

Revision	Description	Drawn	Date
A	Release	PW	20/9/18

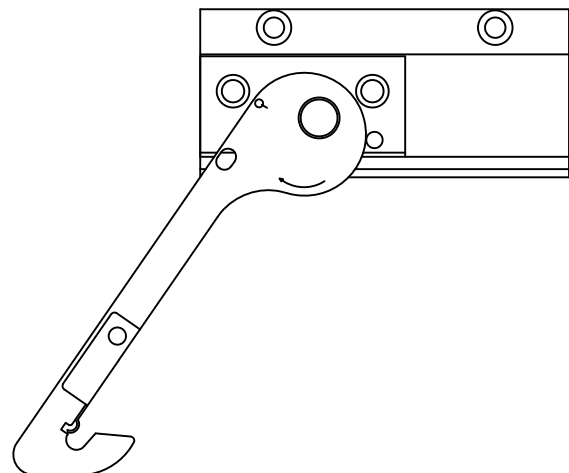
Side Hung Casements Only:
As viewed from the OUTSIDE a Left Hand Restrictor would locate on the Cill of the Left Hung Window, Right Hand would be opposite.

For use with FH70, FH80 & FSS314 Hinges.

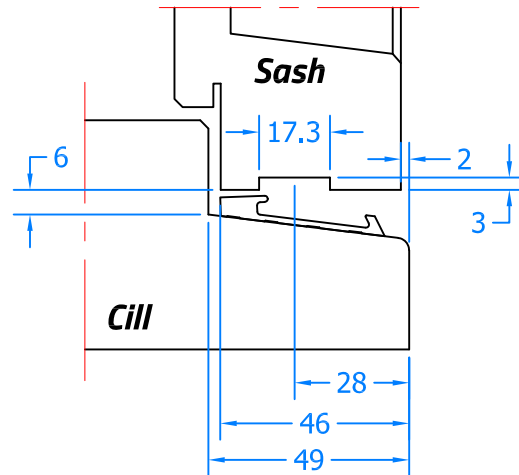
Left Hand Shown, Right Hand Opposite



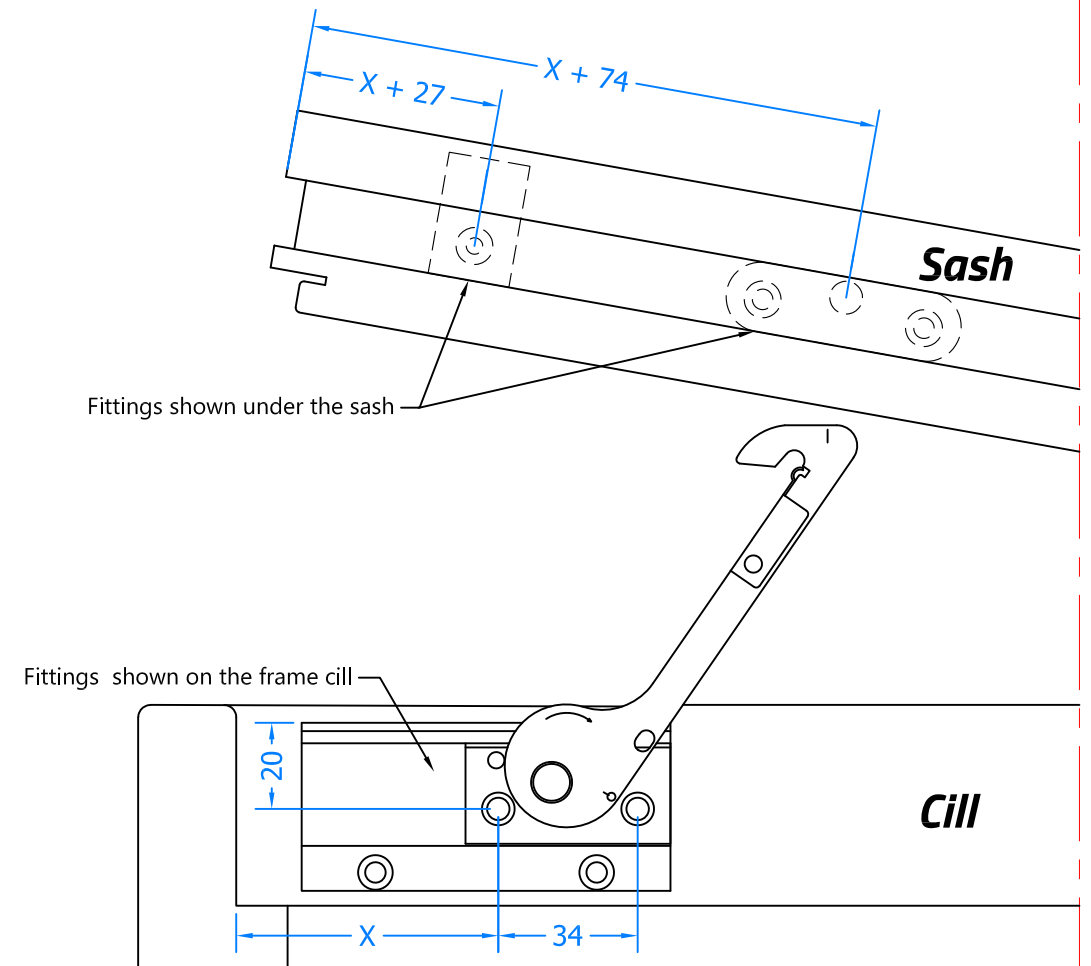
Assembled



Example Profile



Fitting Instructions



Maintenance:

The fittings are not to be painted.
Test the operation and lubricate the pivot (centre of rotation) from time to time, minimum twice a year.

Fitting Instructions:

X-Dimension is optional, we suggest 35mm as minimum, by using a larger X-Dimension the ventilation opening will be extended.

IMPORTANT: The pivot catch of the resistor is fitted in the bottom channel of the sash. Use the mark shown on the restrictor arm as a location point for the pivot catch.

The included support fitting (PVC Block) is mounted in the bottom channel of the sash - opposite the hinge side just over the free part of the small alu-rail.

Operating Instructions:

- 1. Open the sash until the restrictor catch engages.**
- 2. Pull the sash in, approximately 20mm.**
- 3. Press the restrictor arm in the direction of the arrow and open the sash.**
- 4. When the window is closed the restrictor re-engages automatically.**



Innovating & Upgrading the Style,
Performance & Longevity of
External Doors & Windows Globally.

Coastal Specialist Ironmongery Ltd.

Global House, Bojea Industrial Estate, Trethowel, St Austell, PL25 5RJ
t | 01726 871725 - f | 01726 871731 - e | sales@coastal-group.com
w | www.coastal-group.com

Drawing Title:

TF-FSR
Tritus Side Hung Safety Restrictor

Product Range:

Tritus Flush System

Additional Info: **Side Hung Casements Only**
Left Hand Shown, Right Hand Opposite

Date Drawn: 20/09/2018

Drawn By: Phil Walklett

Part Number: **TF-FSR-LH / TF-FSR-RH**

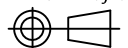
File Name: CG-TF-FSR.dwg

Revision: **A**

Drawing Scale: Not to Scale

Sheet Number: 1 of 1

THIRD ANGLE PROJECTION



This drawing and specification are the property of Coastal, they are issued in strict confidence and shall not be reproduced, copied or used without written permission.

Din A3 - Landscape