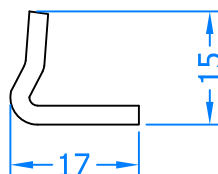
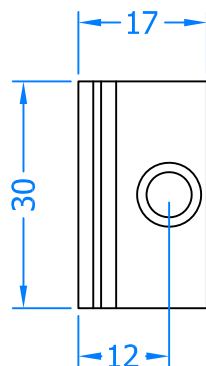


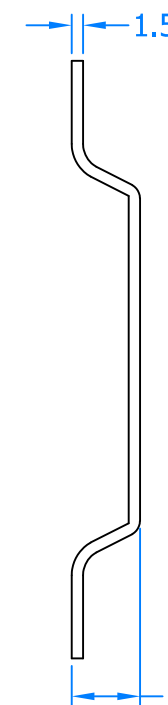
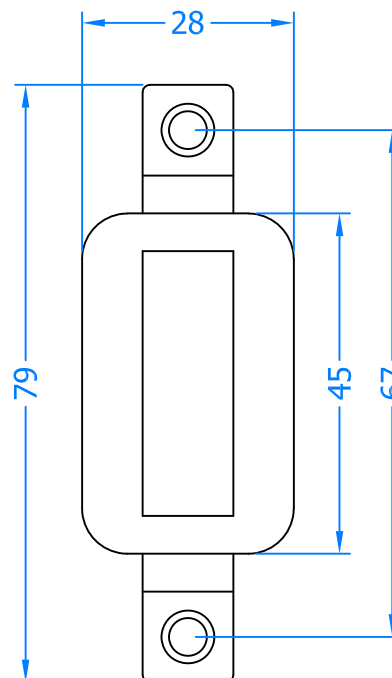
## REVISION HISTORY

Revision	Description	Drawn	Date
A	Release	PW	20/9/18

### FC510 Sash Mounted Lead In Part



### FC520 Frame Mounted Lead In Part



*Innovating & Upgrading the Style,  
Performance & Longevity of  
External Doors & Windows Globally.*

#### Coastal Specialist Ironmongery Ltd.

Global House, Bojea Industrial Estate, Trethowel, St Austell, PL25 5RJ  
t | 01726 871725 - f | 01726 871731 - e | sales@coastal-group.com  
w | www.coastal-group.com

Drawing Title:

**FC500  
Sash & Frame Lead in Parts KIT**

Product Range:

**Tritus Flush System**

Additional Info: **Comprises of FC510 & FC520**

Date Drawn: 20/09/2018

Drawn By: Phil Walklett

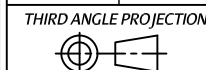
Part Number: **FC500-SV**

File Name: CG-FC500-SV.dwg

Revision: **A**

Drawing Scale: 1:1@A4

Sheet Number: 1 of 1



*This drawing and specification are  
the property of Coastal, they are  
issued in strict confidence and  
shall not be reproduced, copied or  
used without written permission.*