

1. Prepare slots and pre-drill fixing holes. Avoid glazing rebates and reinforcement.
2. Fix vent and canopy using screws and attach screw covers. **DO NOT OVER TIGHTEN!**

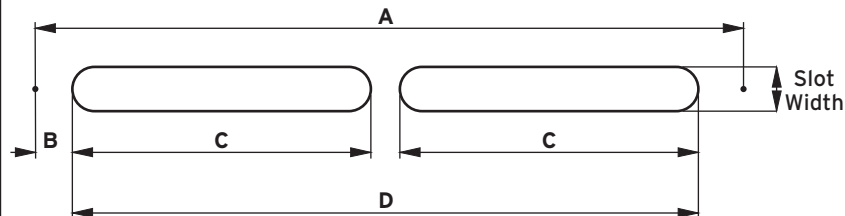
Recommended screws:

Vent: No.7 or No.8 countersunk head or equivalent.

Canopy: No.6 Pan head or equivalent.

We recommend use of Silicone sealant along the canopy sealant groove and when necessary on the underside of the ventilator.

DIM	TVP400V Ventilator	TVP400C Canopy	TVP200V Ventilator	TVP200C Canopy
Product Length	411	412	265	267
Slot width	13	13	13	13
A	387	387	242	242
B	10	10	9.5	9.5
C	173.5	173.5	223	223
D	367	367	Single Slot	Single Slot
Performance	2700mm ² EA** / 4000mm ² Free Area		1700mm ² EA** / 2000mm ² Free Area	



EA = Equivalent Area

All dimensions in mm unless otherwise stated

Any significant variation of the applications shown will affect the EA performance of the product combination

** Tested in accordance with BS:EN 13141-1 (2004)