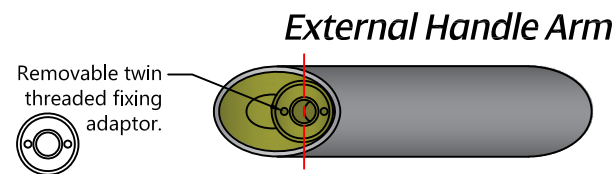
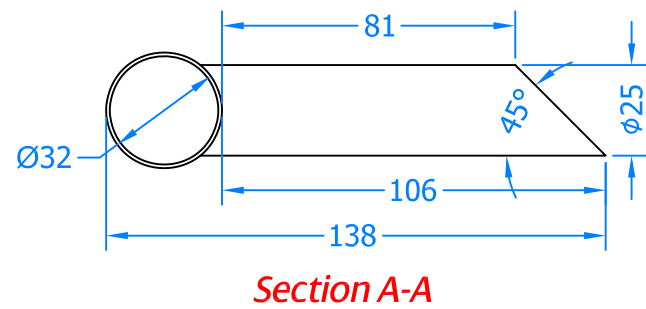
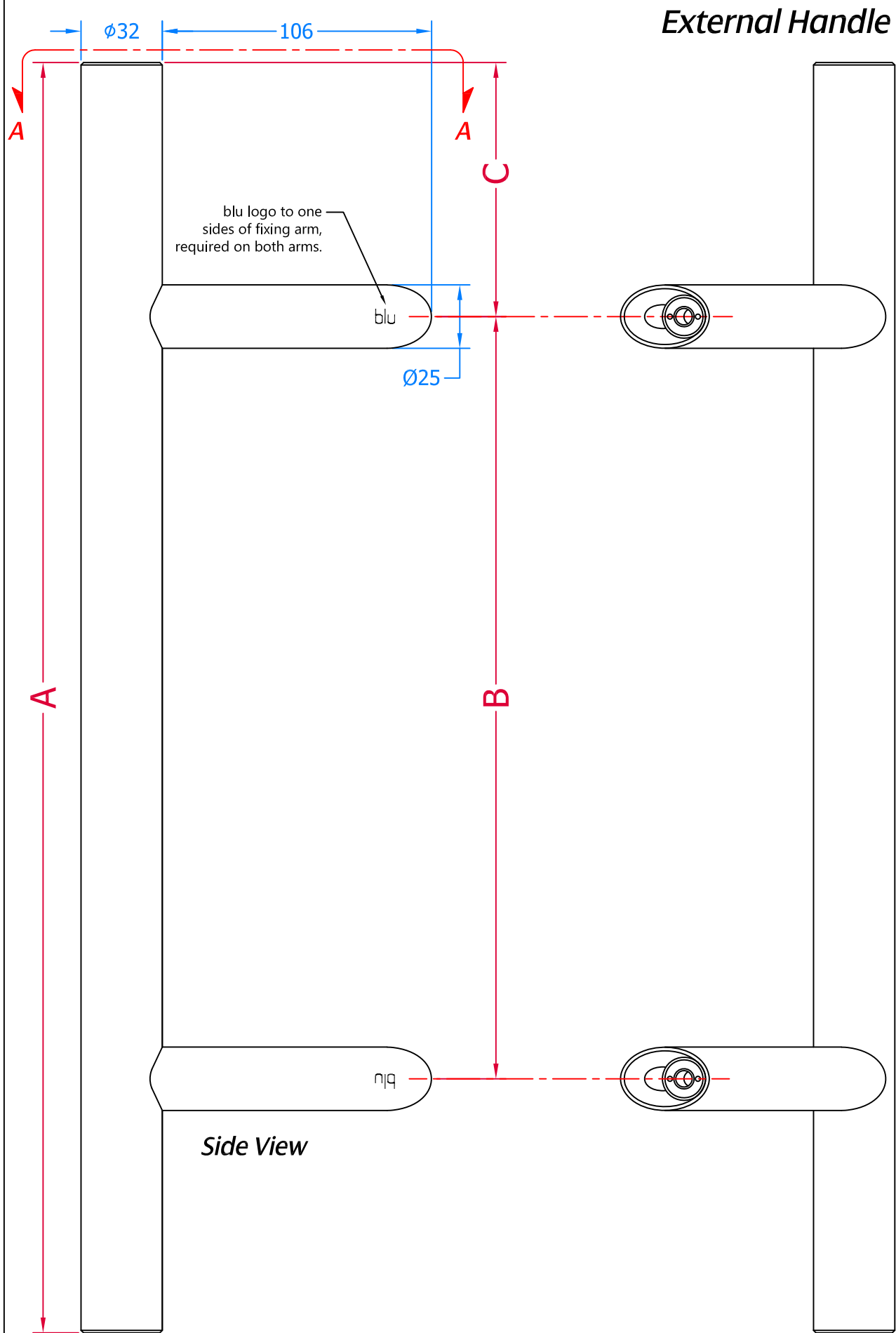
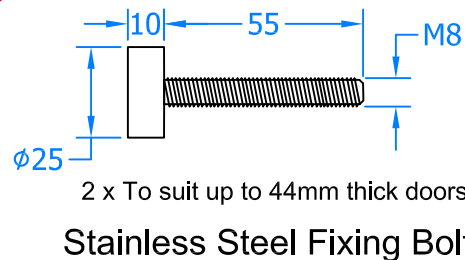
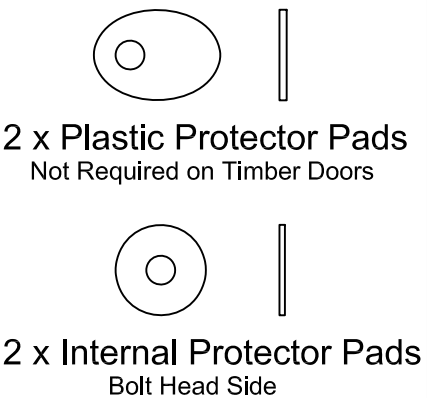
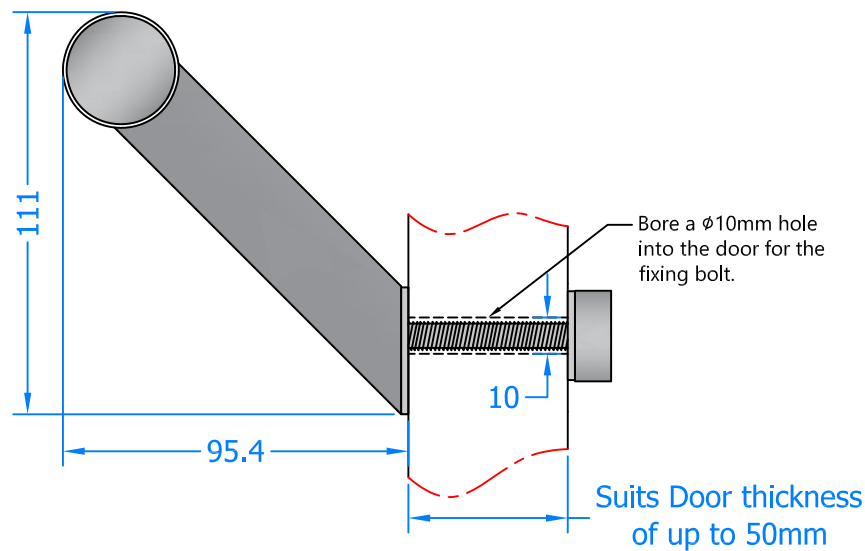


REVISION HISTORY				
Revision	Description	DRFT	CHK	Date
A	Release	PW	BD	04/02/19
B	Added 900mm & 1500mm versions.	PW	BD	20/03/19



External Handle



Part Number	Length (A)	Centre (B)	Distance (C)
HAB6-600-BF	600mm	400mm	100mm
HAB6-900-BF	900mm	700mm	100mm
HAB6-1200-BF	1200mm	1000mm	100mm
HAB6-1500-BF	1500mm	1300mm	100mm
HAB6-1800-BF	1800mm	1600mm	100mm



Global House
Bojea Industrial Estate
Trethowel, St Austell
Cornwall, PL26 5RJ

t | 01726 871724
f | 01726 871731
sales@blu-performance.com
www.blu-performance.com

blu™ Performance

Drawing Title:
HAB6 - Offset Round 'T' Bar Pull Handle - Bolt Fixing Method

Product Range:
Stainless Steel Pull Handles

Additional Info: Sulte up to 44mm Thlck Door.

Date Drawn: 20/03/2019

Drawn By: Phil Walklett

Part Number: HAB6-(SIZE)-BF-SSS

File Name: BP-HAB6-BF-SSS.dwg

Revision: B

Drawing Scale: Not to Scale

Sheet Number: 1 of 1

THIRD ANGLE PROJECTION

This drawing and specification are the property of blu Performance, they are issued in strict confidence and shall not be reproduced, copied or used without written permission.