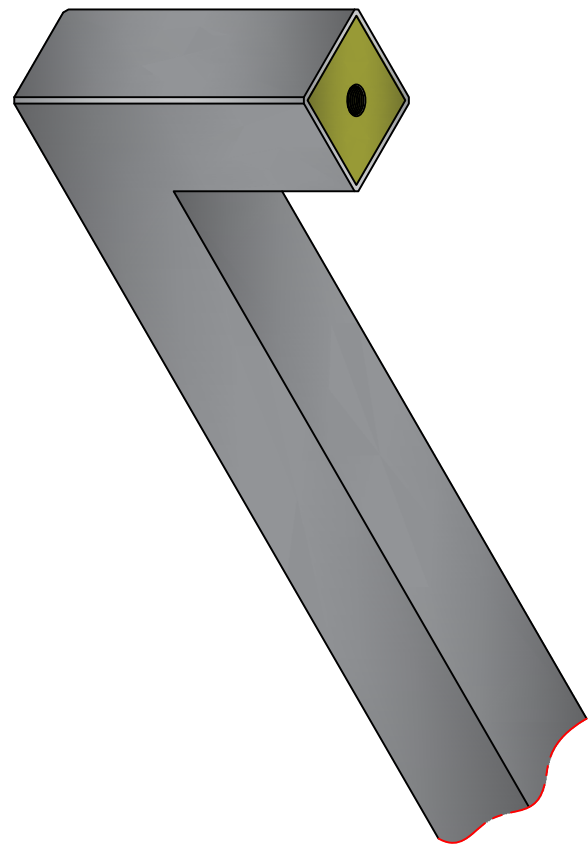
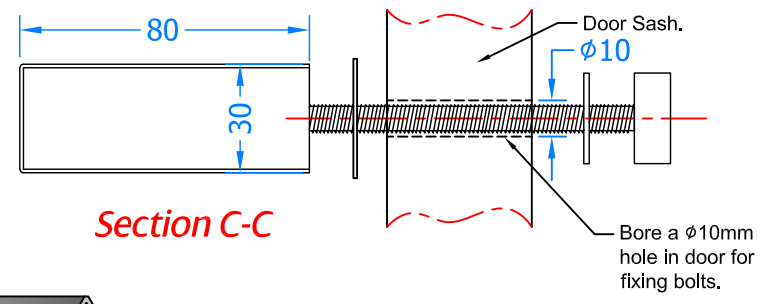
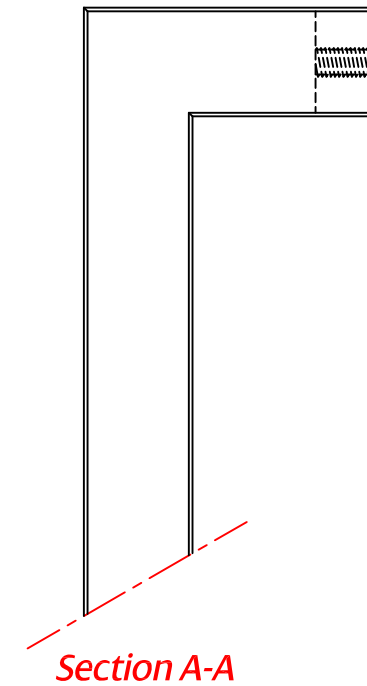
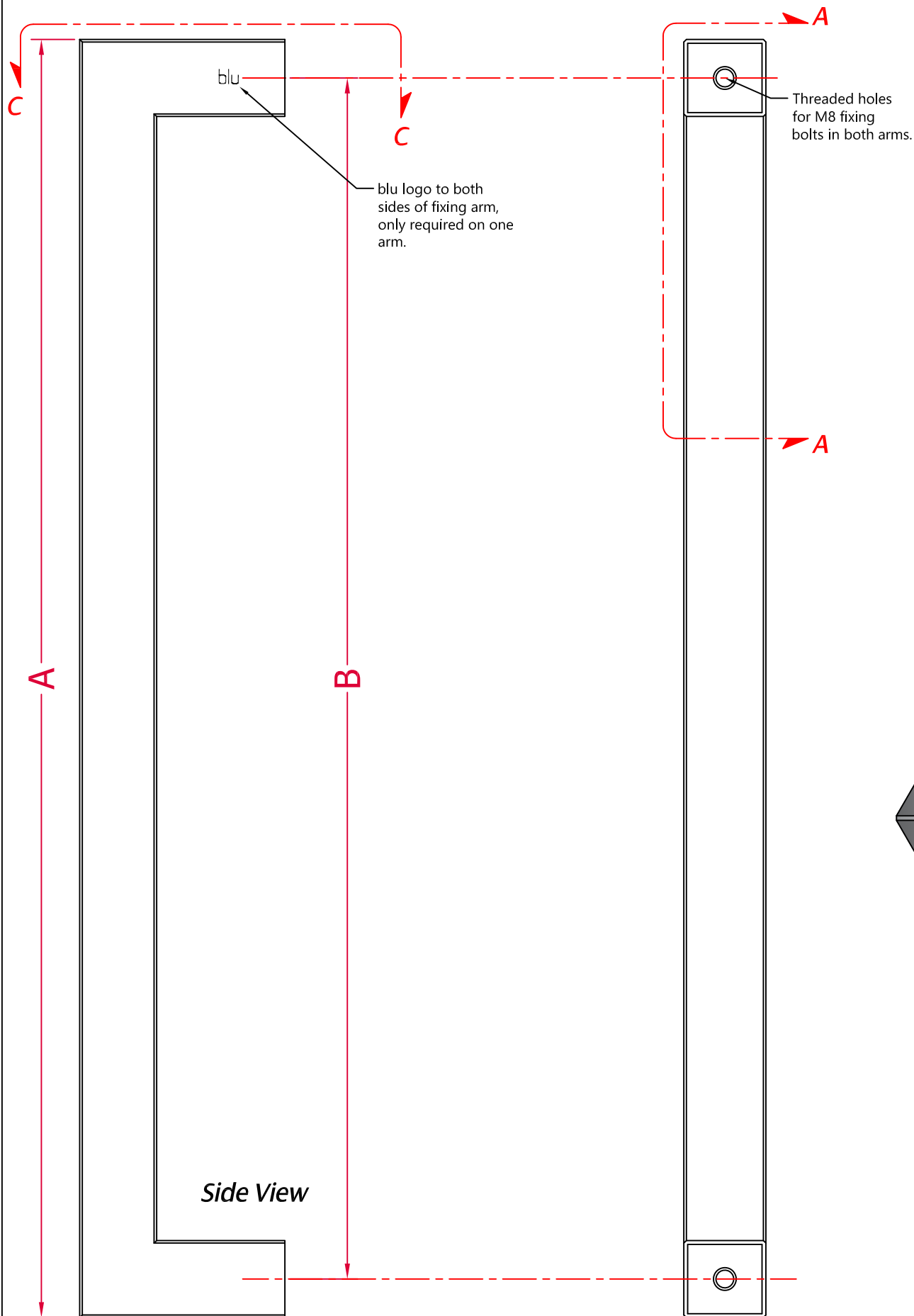


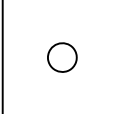

REVISION HISTORY				
Revision	Description	DRFT	CHK	Date
A	Release	PW	BD	06/02/19

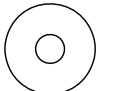

External Handle

External Handle

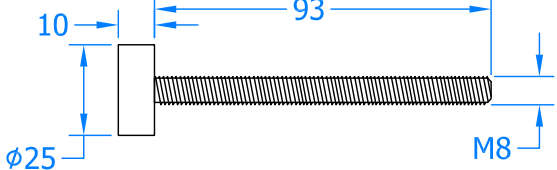


 
2 x Glass Protector Pads
 Not Required on Timber Doors

 
2 x Metal Washers

 
2 x Internal Protector Pads
 Bolt Side

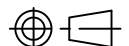

1 x 3mm Allen Key


2 x Stainless Steel Fixing Bolts
 To suit up to 85mm thick doors.

Part Number	Length (A)	Centre (B)
HAB4-1200-BF	1230mm	1200mm

 **blu™ Performance**
 Global House
 Bojea Industrial Estate
 Trethewel, St Austell
 Cornwall, PL25 5RJ
 t | 01726 871724
 f | 01726 871731
 sales@blu-performance.com
 www.blu-performance.com

blu™ Performance	
Drawing Title: HAB4 - Square Mitre Pull Handle Bolt Fixing Method	
Product Range: Stainless Steel Pull Handles	
Additional Info:	
Date Drawn:	06/02/2019
Drawn By:	Phil Walklett
Part Number:	HAB4-(SIZE)-BF-SSS
File Name:	BP-HAB4-BF-SSS.dwg
Revision:	A
Drawing Scale:	Not to Scale
Sheet Number:	1 of 1

THIRD ANGLE PROJECTION  This drawing and specification are the property of blu Performance, they are issued in strict confidence and shall not be reproduced, copied or used without written permission.