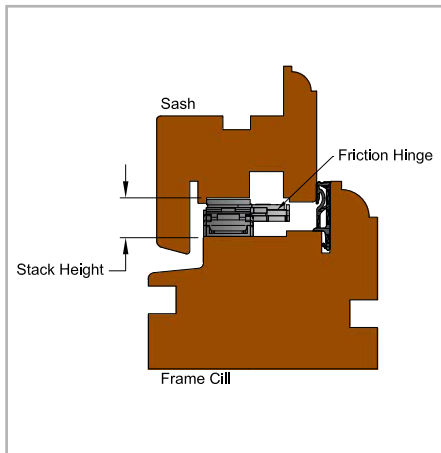


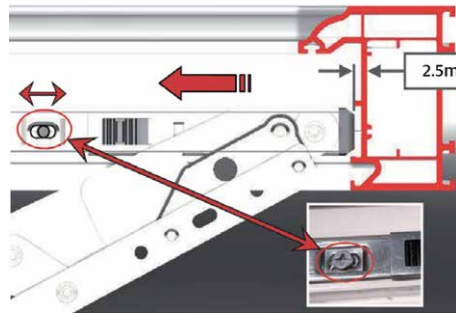
FITTING GUIDE

SUMO - EGRESS FRICTION HINGE

FITTING TO FRAME:



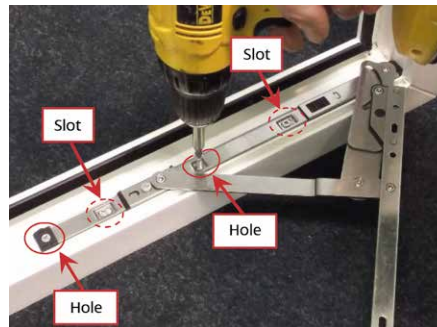
Typical fit into profile
Stack height 14.5 mm



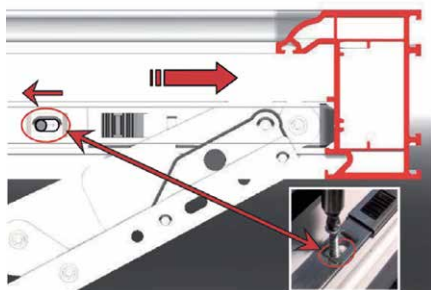
- Slide hinge out so that screw is in centre of slot leaving 2.5mm for adjustment if required.



- Place hinge onto frame and push head of hinge into corner as shown.



- Insert suitable screws into 2 holes as shown.



- Insert suitable screws into 2 slots at end of slot furthest from head of hinge as shown.



- Slide "Easy Clean" activation button and move Top Slider until final screw position is exposed and insert screw.



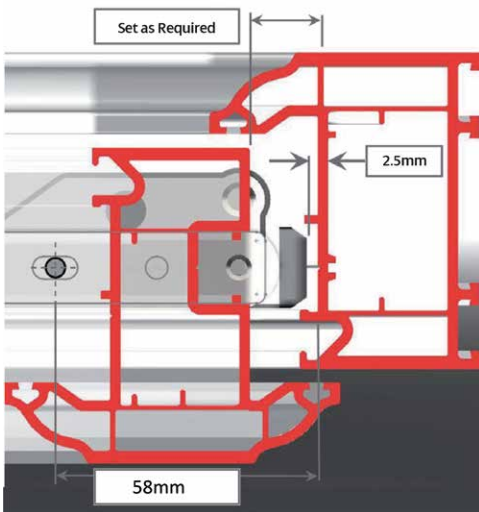
COASTAL

Shaping the future.

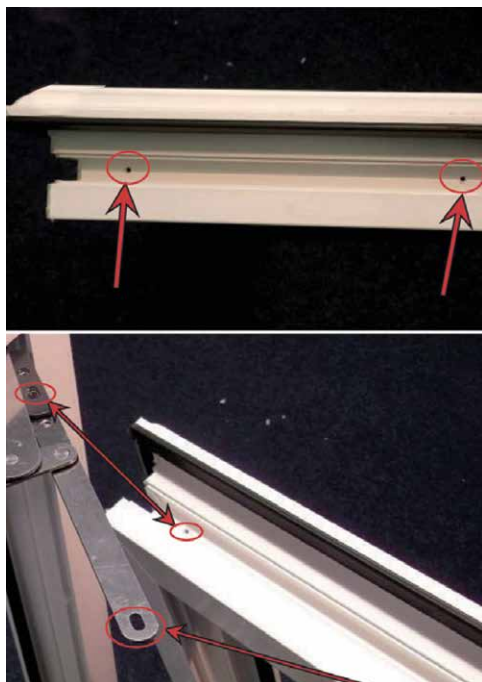
FITTING GUIDE

SUMO - EGRESS FRICTION HINGE

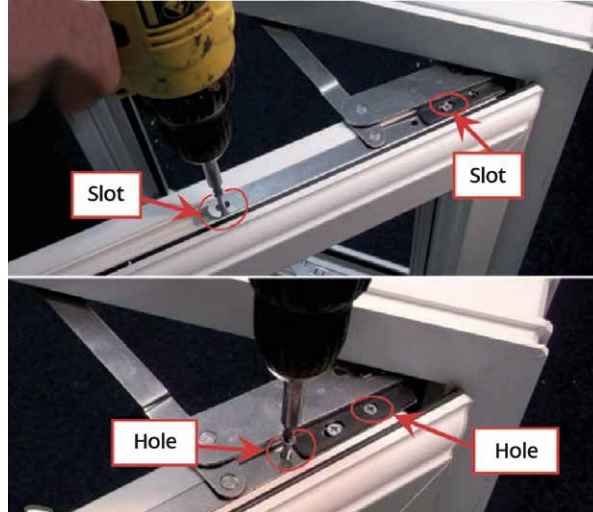
FITTING TO SASH:



58mm is the distance from frame to the middle of the first slot on Sash.



1. It is recommended that pilot holes are pre-drilled at the 2 slot positions on Sash.



2. Insert suitable screw into the 2 slots, make adjustments to Sash position if required, then insert screw into the 2 holes.



3. To activate the "Easy Clean" mode push both black slide buttons (top and bottom) towards the corner and slide the Sash away from the corner.



COASTAL

Shaping the future.