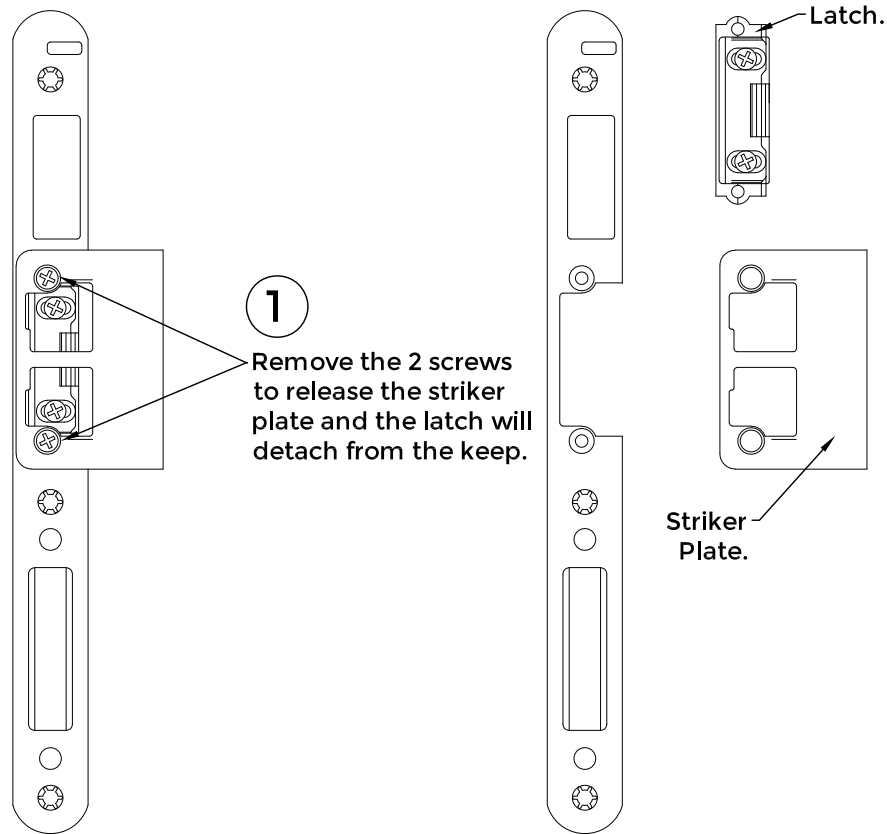
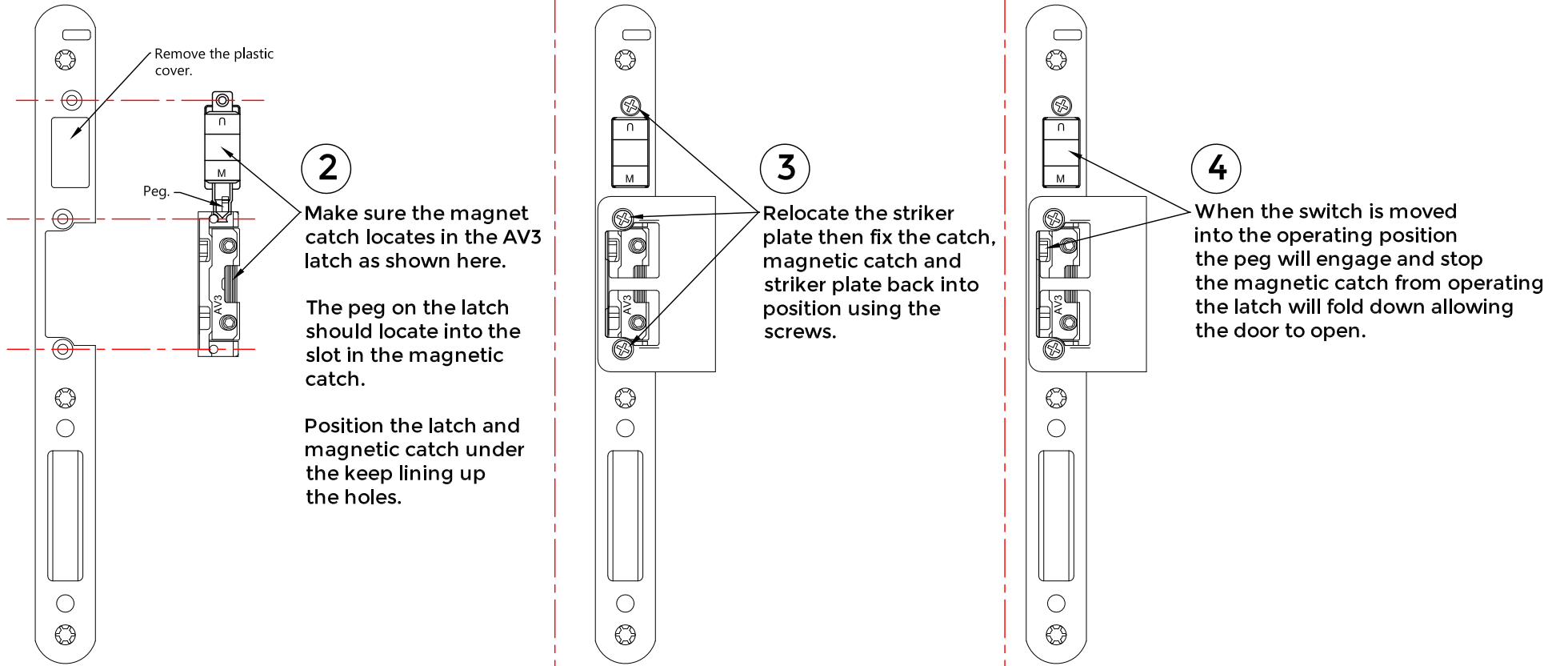


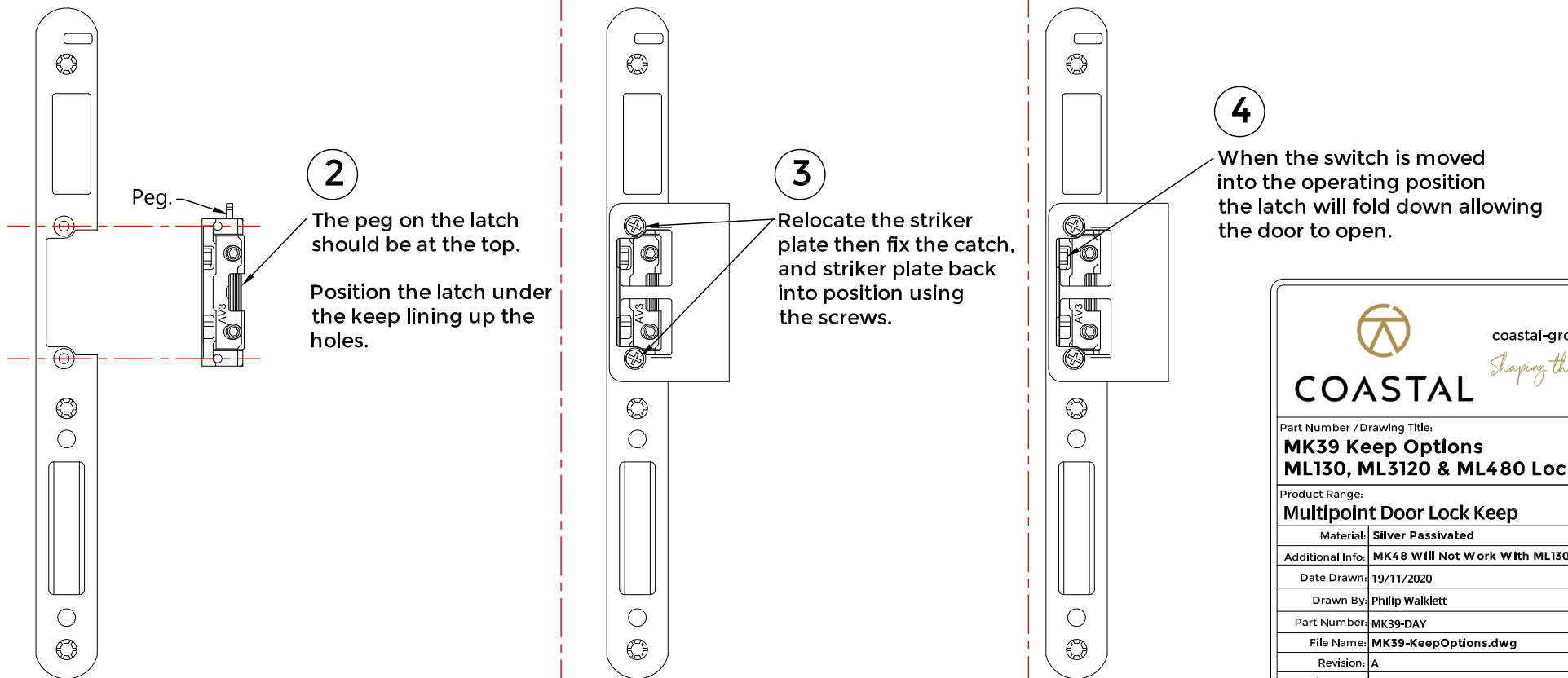
# MK39-DAY Latch Function Right Hand Keep Shown



## ML3120 & ML480 (MK48 Keep)



## ML130 Option (MK39-DAY with MK39 Keep)



REVISION HISTORY		
Revision	Description	Date
A	Release	19/11/2020



Part Number / Drawing Title:  
**MK39 Keep Options  
ML130, ML3120 & ML480 Locks**

Product Range:  
**Multipoint Door Lock Keep**

Material: **Silver Passivated**

Additional Info: **MK48 Will Not Work With ML130 Lock!**

Date Drawn: 19/11/2020

Drawn By: Philip Walklett

Part Number: MK39-DAY

File Name: MK39-KeepOptions.dwg

Revision: A

Drawing Scale: Not to Scale

Sheet Number: 1 of 1

THIRD ANGLE PROJECTION This drawing and specification are the property of Coastal Specialist Ironmongery Ltd, they are issued in strict confidence and shall not be reproduced, copied or used without written permission.