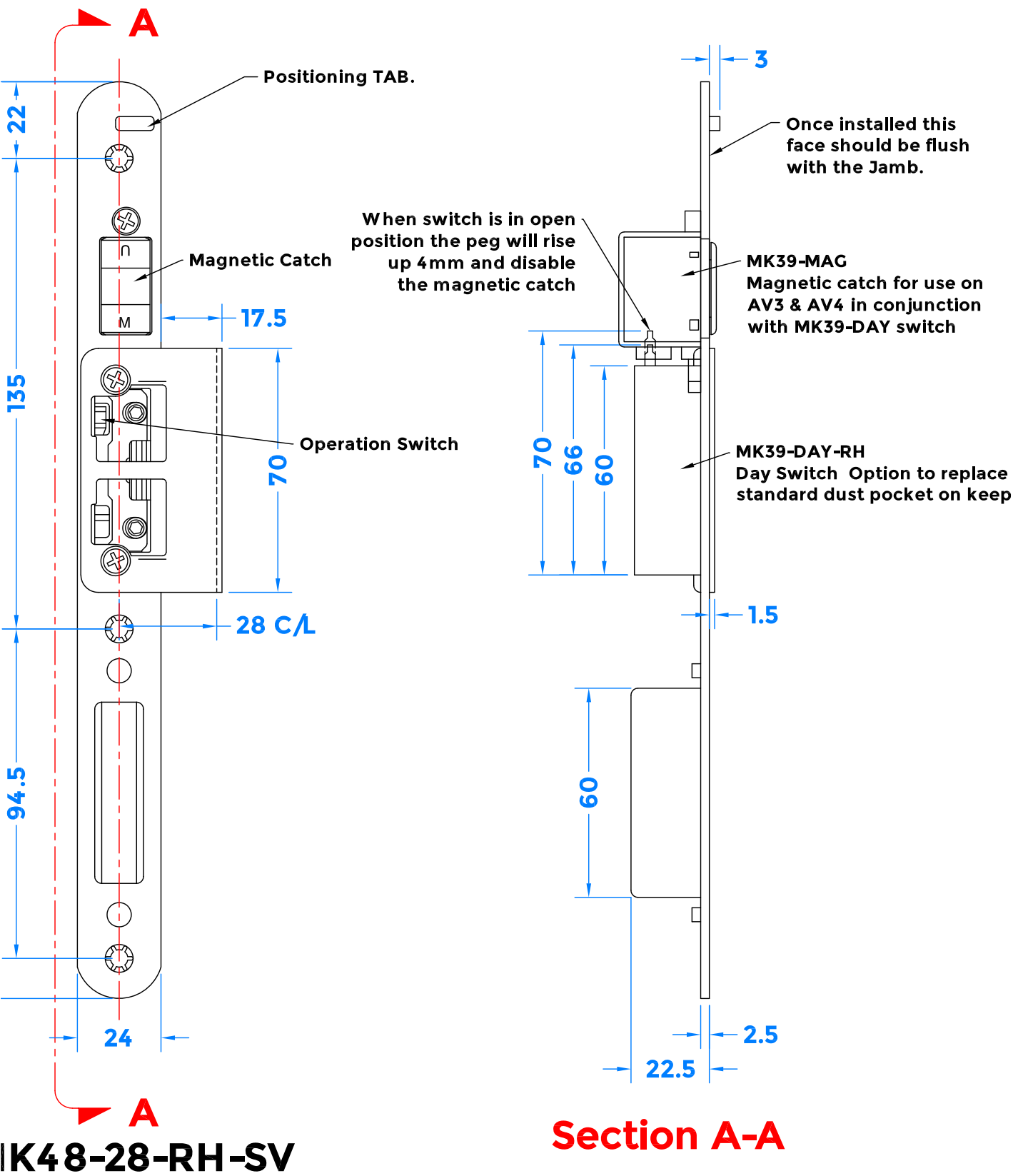


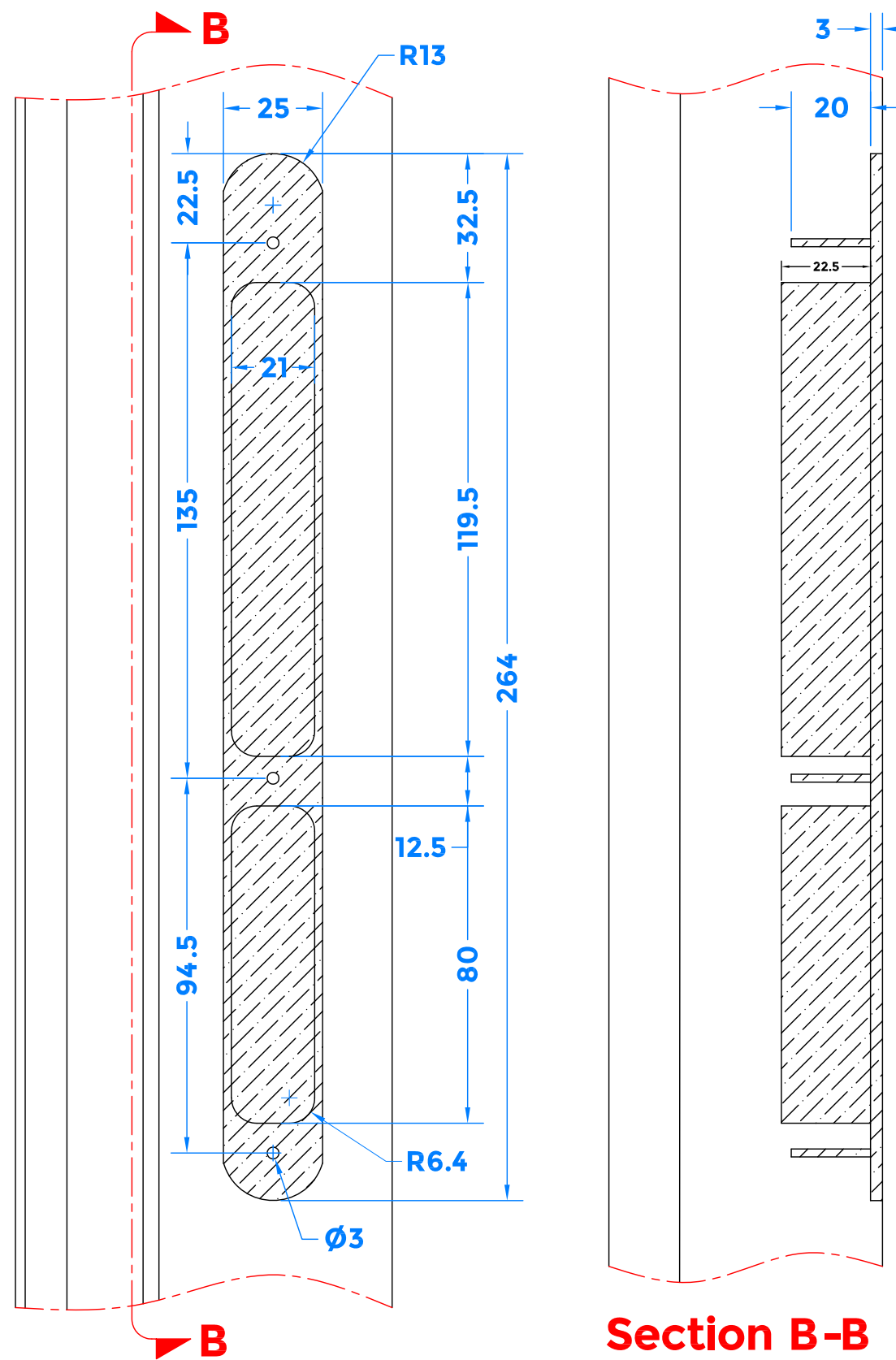
REVISION HISTORY		
Revision	Description	Date
A	Release	16/04/2019
B	Altered Keep Depth, now sits flush to Jamb	19/11/2020

MK48 - Fully Assembled Keep, 28mm Centre Line

Right Hand Keep Shown, Left Hand Opposite



Routing Prep Details



This Keep will only work with ML3120 & ML480 Multipoint Door Locks NOT the ML130

⚠ - All measurements are finished dimensions in MM.

COASTAL *Shaping the future*

coastal-group.com

Part Number / Drawing Title:
MK48-28-RH
Fully Assembled Centre Keep

Product Range:
Multipoint Door Lock Keeps

Material: Silver Passivated

Additional Info: Day Latch & Magnet Assembly 28mm C/L

Date Drawn: 19/11/2020

Drawn By: Philip Walklett

Part Number: MK48-28-RH

File Name: MK48-28.dwg

Revision: B

Drawing Scale: Not to Scale

Sheet Number: 1 of 1

THIRD ANGLE PROJECTION

This drawing and specification are the property of Coastal Specialist Ironmongery Ltd, they are issued in strict confidence and shall not be reproduced, copied or used without written permission.

Din A3 - Landscape