

# BLU RANGE

## BUTT HINGE - SQUARE CORNER

Product Code: HQ4

LIT-DC-HQ4



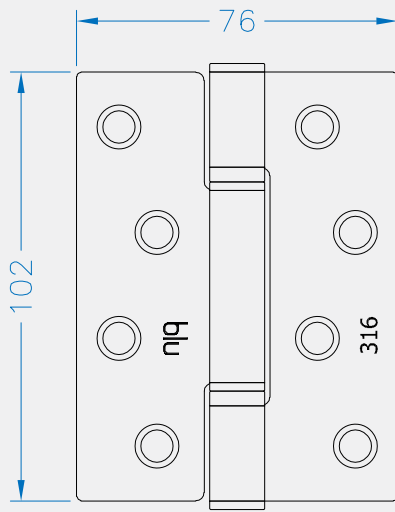
### *316 Marine Grade Stainless Steel Hardware Range*

- High quality 316 Marine Grade Stainless Steel butt hinge
- Clean lined, triple knuckle butt hinge with a 3mm gap
- Self-lubricating phosphor bronze washers to ensure no messy oil leaks
- Tested to BS EN 1935:2002 - 200,000 cycles
- No leaf play ensures an accurate and consistent fit
- Works well with the Shimwell Hinge Packer System
- Ideal for use where corrosion levels are high such as coastal environments and with acidic timber
- Weight Capacity: 120kg over 3 hinges
- Lifetime Guarantee for finishes SSS, PSS, PSB and PPB
- 15 year guarantee for finishes MSB, ORB and WH

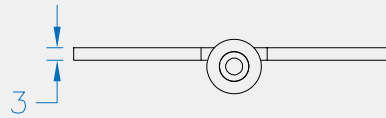
T 01726 871 025 E [sales@coastal-group.com](mailto:sales@coastal-group.com) W [coastal-group.com](http://coastal-group.com)

  
**COASTAL**  
*Shaping the future.*

Front Profile



Side Profile



Visit [www.coastal-group.com](http://www.coastal-group.com) for CAD drawings

FINISHES:



**SSS**  
Satin Stainless Steel



**PSS**  
Polished Stainless Steel



**PSB**  
PVD Satin Brass



**PPB**  
PVD Polished Brass



**ORB**  
Oil Rubbed Bronze



**WH**  
White

PART NUMBER	PRODUCT DESCRIPTION	FINISH	UNITS
HQ4-SSS	102 x 76 x 3mm Square corner	<b>SSS</b>	Each
HQ4-PSS	102 x 76 x 3mm Square corner	<b>PSS</b>	Each
HQ4-PSB	102 x 76 x 3mm Square corner	<b>PSB</b>	Each
HQ4-PPB	102 x 76 x 3mm Square corner	<b>PPB</b>	Each
HQ4-ORB	102 x 76 x 3mm Square corner	<b>ORB</b>	Each
HQ4-WH	102 x 76 x 3mm Square corner	<b>WH</b>	Each
HQ4-MSB	102 x 76 x 3mm Square corner	<b>MSB</b>	Each



**MSB**  
Matt Smooth Black

**Note:** Matt Smooth Black, White & Oil Rubbed Bronze hinges are not supplied with fixings you need to use code FX-RHF530



**COASTAL**

*Shaping the future.*