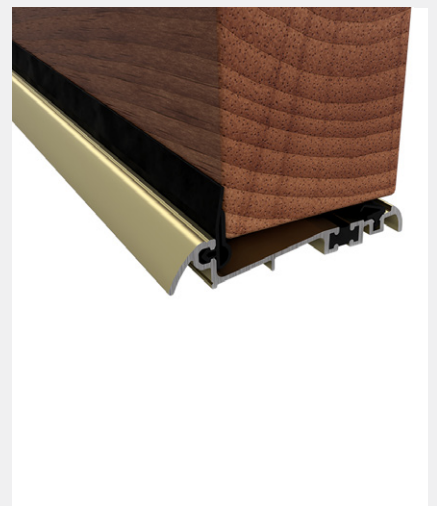


TSW INWARD OPENING THRESHOLD - THERMAL BREAK

Product Code: TSW3

LIT-DC-TSW3



Aluminium Threshold Range

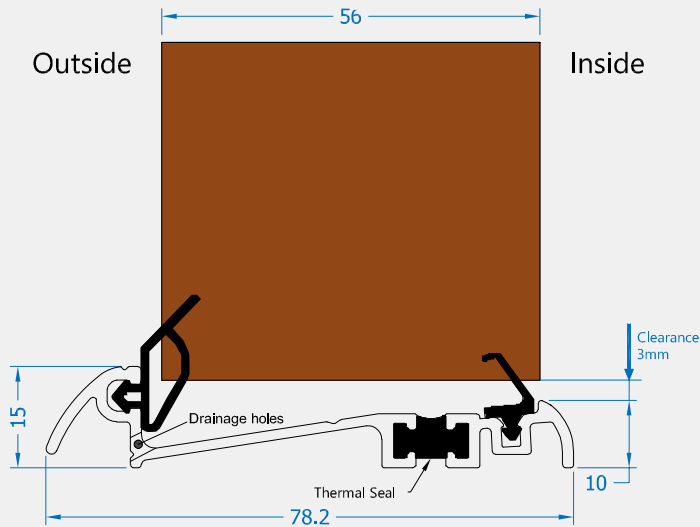
- Inward opening aluminium threshold
- Incorporates thermal break to meet thermal bridging and insulation requirements
- Part M Compliant inward open mobility threshold suitable for disabled access
- Designed to fit onto a subsill or directly onto a base threshold
- Features pre-drilled drainage and fixing holes to speed up production
- Seals gaps 12 - 14mm
- Replacement seals available



COASTAL

Shaping the future.

Side Profile

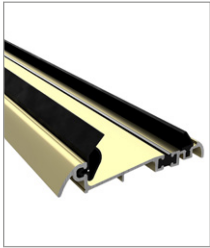


Visit www.coastal-group.com for CAD drawings

FINISHES:



SV
Silver Passivated



GD
Gold



BK
Black

PART NUMBER	PRODUCT DESCRIPTION	FINISH	UNITS
TSW3-56-SV	3000mm Inward opening 78mm to suit 56mm door	SV	Each
TSW3-56-GD	3000mm Inward opening 78mm to suit 56mm door	GD	Each
TSW3-56-BK	3000mm Inward opening 78mm to suit 56mm door	BK	Each



COASTAL

Shaping the future.