

# PRESSED SASH LIFT

Product Code: SL100

LIT-DC-SL100



## *Solid Brass Range*

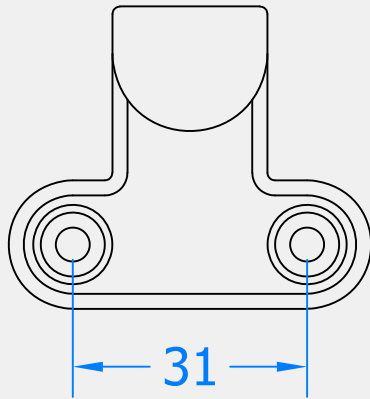
- Sash lift for vertical sliding box sash windows
- Fitted to the bottom of the sash to lift the window up
- Meets the requirements of BS EN 1670:2007 Grade 5 Corrosion Resistance (480 hours)



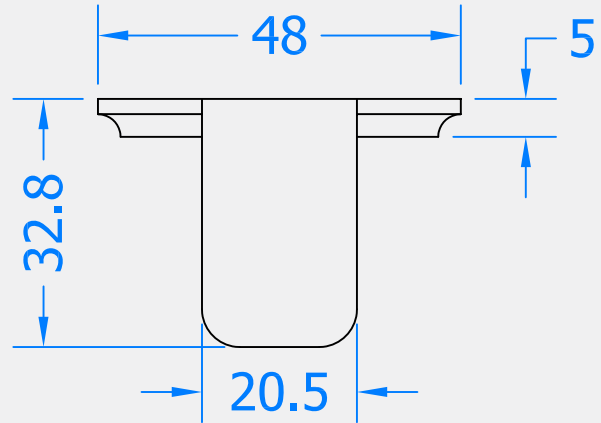
**COASTAL**

*Shaping the future.*

Front Profile



Top Profile



Visit [www.coastal-group.com](http://www.coastal-group.com) for CAD drawings

FINISHES:



SC  
 Satin Chrome



CP  
 Polished Chrome



PB  
 Polished Brass

PART NUMBER	PRODUCT DESCRIPTION	FINISH	UNITS
SL100-SC	Pressed sash lift	SC	Each
SL100-CP	Pressed sash lift	CP	Each
SL100-PB	Pressed sash lift	PB	Each



**COASTAL**

*Shaping the future.*