

BLU RANGE

SLIM KNUCKLE WINDOW HINGE - SQUARE CORNER

Product Code: HY3

LIT-DC-HY3



316 Marine Grade Stainless Steel Hardware Range

- Ultimate high quality butt hinge made from 316 Marine Grade Stainless Steel
- Clean lined, slim knuckle window hinge
- Precision engineered components ensure a 'smooth friction' operation & prevent hinge from collapsing
- No leaf play ensures an accurate and consistent fit
- Tested to BS EN 1935:2002 Grade 6 - 25,000 cycles
- Works well with the Shimwell Hinge Packer System
- Ideal for use where corrosion levels are high such as coastal environments and with acidic timber
- Weight Capacity: 40kg over 2 hinges
- Lifetime guarantee

T 01726 871 025 E sales@coastal-group.com W coastal-group.com
© Coastal Specialist Ironmongery Ltd

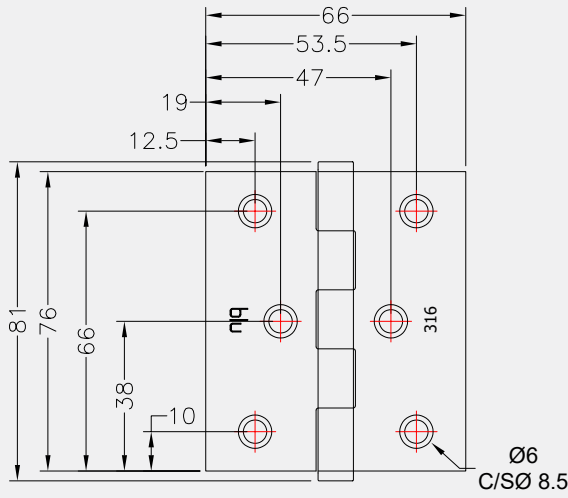


COASTAL

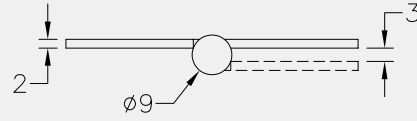
Shaping the future.

SLIM KNUCKLE WINDOW HINGE - SQUARE CORNER

Front Profile



Top Profile



Visit www.coastal-group.com for CAD drawings

FINISHES:



SSS
Satin Stainless Steel



PSS
Polished Stainless Steel



SB
Satin Brass



PPB
Polished Brass



MSB
Matt Black

PART NUMBER	PRODUCT DESCRIPTION	FINISH	UNITS
HY3-SSS	76 x 65 x 2mm Window hinge	SSS	Each
HY3-PSS	76 x 65 x 2mm Window hinge	PSS	Each
HY3-PSB	76 x 65 x 2mm Window hinge	SB	Each
HY3-PPB	76 x 65 x 2mm Window hinge	PPB	Each
HY3-MBK	76 x 65 x 2mm Window hinge	MSB	Each



COASTAL

Shaping the future.