

BLU RANGE

## BUTT HINGE - SQUARE CORNER WITH DOGBOLT

Product Code: HQ4-SEC

LIT-DC-HQ4-SEC



### *316 Marine Grade Stainless Steel Hardware Range*

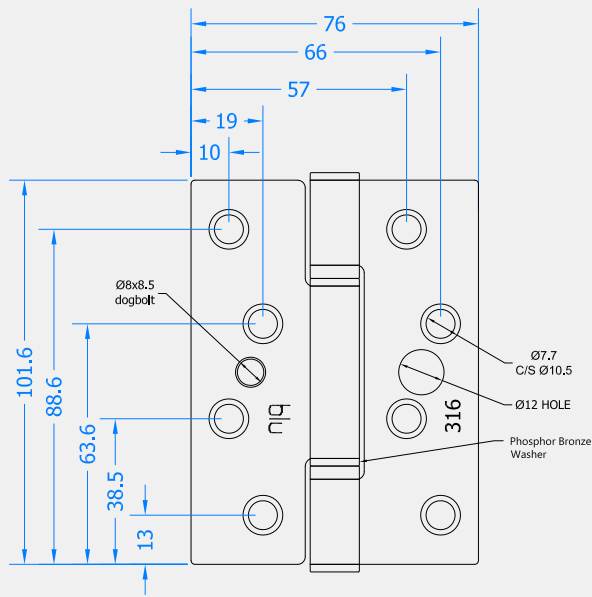
- High quality 316 Marine Grade Stainless Steel butt hinge
- Clean lined, triple knuckle butt hinge with a 3mm gap
- Self-lubricating phosphor bronze washers to ensure no messy oil leaks
- Security dogbolt feature prevents removal of door leaf if hinge knuckle is attacked
- Tested to BS EN 1935:2002 Grade 13 - 200,000 cycles
- No leaf play ensures an accurate and consistent fit
- Works well with the Shimwell Hinge Packer System
- Weight Capacity: 120kg over 3 hinges
- Ideal for use where corrosion levels are high such as coastal environments and with acidic timber
- Lifetime Guarantee

T 01726 871 025 E [sales@coastal-group.com](mailto:sales@coastal-group.com) W [coastal-group.com](http://coastal-group.com)  
© Coastal Specialist Ironmongery Ltd

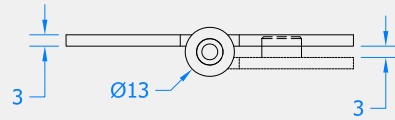
  
**COASTAL**  
*Shaping the future.*

BUTT HINGE - SQUARE CORNER WITH DOGBOLT

Front Profile



Top Profile



Visit [www.coastal-group.com](http://www.coastal-group.com) for CAD drawings

FINISHES:



SSS

Satin Stainless Steel

PART NUMBER	PRODUCT DESCRIPTION	FINISH	UNITS
HQ4-SEC-SSS	102 x 76 x 3mm Square corner with dogbolt	SSS	Each



**COASTAL**

*Shaping the future.*