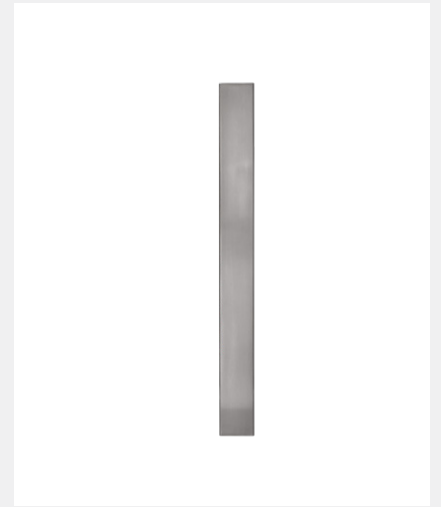


BLU RANGE

## STRAIGHT SLIDE DOOR HANDLE - INLINE RECTANGLE 'T' BAR

LIT-DC-IRPH



### *316 Marine Grade Stainless Steel Hardware Range*

- Finest quality inline rectangular 'T' bar pull handle
- Heavy duty 1.5mm stainless steel wall thickness for a superior feel & increased tensile strength
- Handle ends are CNC machined for a precision engineered consistent finish
- Part of a suited range of door & window hardware
- Designed with no middle stem to avoid conflicting with locking mechanism
- Manufactured from 316 Marine Grade Stainless Steel
- Ideal for use where corrosion levels are high, such as coastal environments and with acidic timber
- Lifetime guarantee

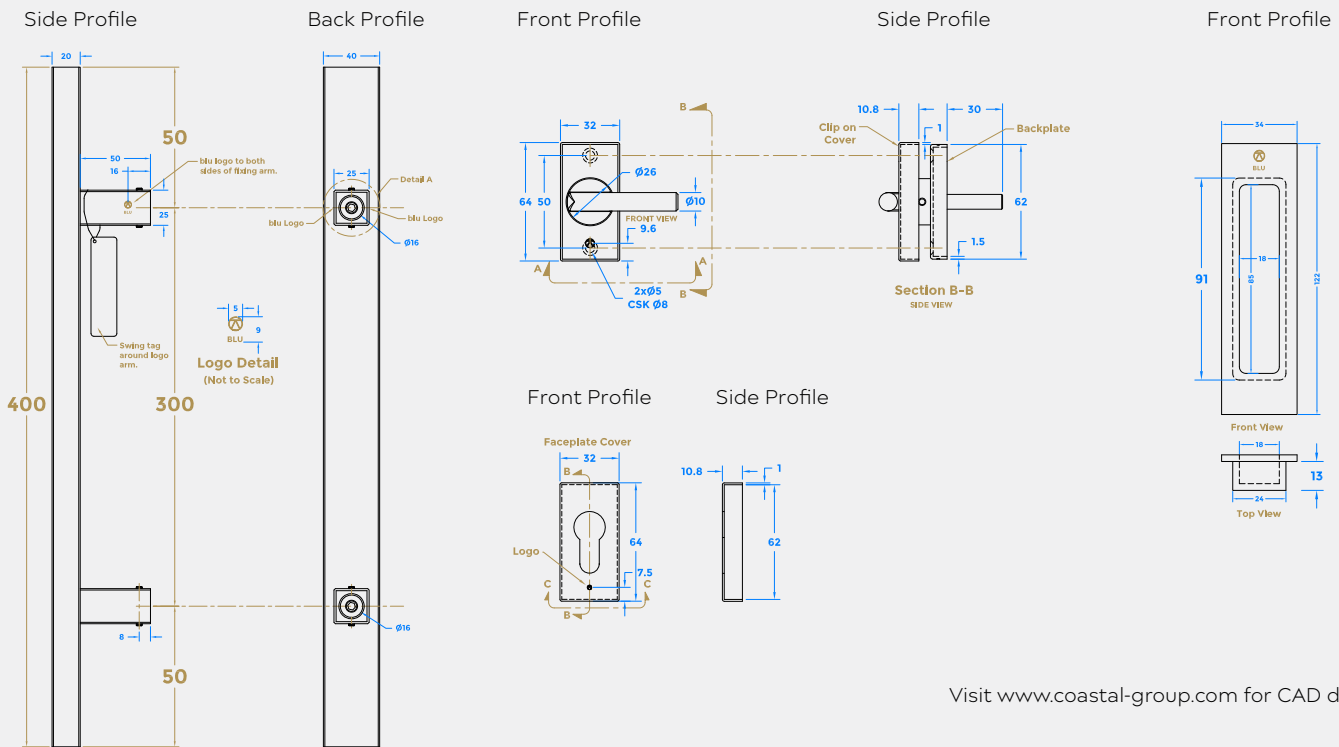
T 01726 871 025 E [sales@coastal-group.com](mailto:sales@coastal-group.com) W [coastal-group.com](http://coastal-group.com)  
© Coastal Specialist Ironmongery Ltd



# COASTAL

*Shaping the future.*

# STRAIGHT SLIDE DOOR HANDLE - INLINE RECTANGLE 'T' BAR



Visit [www.coastal-group.com](http://www.coastal-group.com) for CAD drawings

## CONFIGURATIONS & FINISHES:



HAB15-400-UF-SSS

SSS

Satin Stainless Steel



HAB15-KIT-400-SA-MBL

MBL

Matt Black Lacquer



KM853-SING-SSS

SSS

Satin Stainless Steel



KM853-PAIR-SSS

SSS

Satin Stainless Steel

PART NUMBER	PRODUCT DESCRIPTION	FINISH	UNITS
HAB15-400-UF-SSS	400mm Rectangular 'T'bar, universal fix	SSS	Each
HAB15-400-UF-MBL	400mm Rectangular 'T'bar, universal fix	MBL	Each
HAB15-KIT-400-SA-SSS	400mm Rectangular 'T'bar, secret fix, c/w fixings	SSS	Kit
HAB15-KIT-400-SA-MBL	400mm Rectangular 'T'bar, secret fix, c/w fixings	MBL	Kit
KM853-SING-SSS	400mm Rectangular 'T' bar, secret fix handle kit - flush pull kit	SSS	Kit
KM853-SING-MBL	400mm Rectangular 'T' bar, secret fix handle kit - flush pull kit	MBL	Kit
KM853-PAIR-SSS	400mm Rectangular 'T' bar, back to back fix handle kit	SSS	Kit
KM853-PAIR-MBL	400mm Rectangular 'T' bar, back to back fix handle kit	MBL	Kit



# COASTAL

*Shaping the future.*