

LEAD SASH WEIGHTS

Product Code: LW

LIT-DC-LW



Sliding Sash Hardware Range

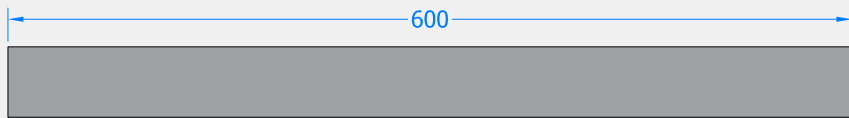
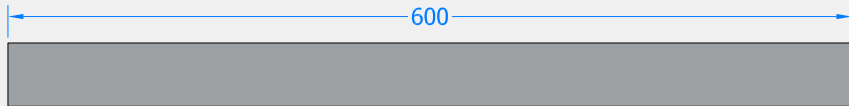
- Lead Weights stocked in 600mm lengths suitable for traditional vertical sliding box sash windows
- These weights have an 11mm hole running through the centre and can be cut to the length as required on site
- Offcuts can be reused as weights or makeweights
- Successfully used in our Part Q Test
- Due to price fluctuations lead weights must be ordered via our office on 01726 871025 or sales@coastal-group.com



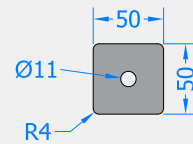
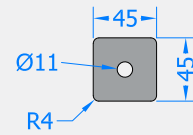
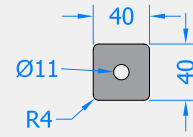
COASTAL

Shaping the future.

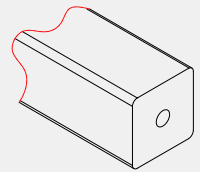
Side Profile



Front Profile



Isometric View



Visit www.coastal-group.com for CAD drawings

FINISHES:



PART NUMBER	PRODUCT DESCRIPTION	FINISH	UNITS
LW40	40 x 40 x 600mm Lead Bar 19.9lb/8.8kg	-	Each
LW45	45 x 45 x 600mm Lead Bar 26.5lb/12.2kg	-	Each
LW50	50 x 50 x 600mm Lead Bar 36.6lb/16.4kg	-	Each



COASTAL

Shaping the future.