

STEEL SASH WEIGHTS

Product Code: SW

LIT-DC-SW



Sliding Sash Hardware Range

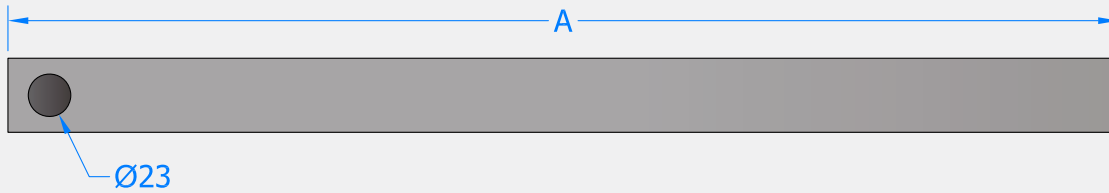
- Steel sash weights cost significantly less than traditional lead sash weights
- The weights are coated to inhibit rust and will fit the majority of sash windows
- These sash weights come with a large 23mm diameter hole so you can feed the sash cord through the end of the weight and tie the knot, then pull the cord back through so the weight hangs vertically
- Steel weights cannot be cut down to size so please ensure that the section size will fit your sash box
- Successfully used in our Part Q Test
- Due to courier price fluctuations steel weights must be ordered via our office on 01726 871025 or sales@coastal-group.com



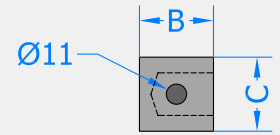
COASTAL

Shaping the future.

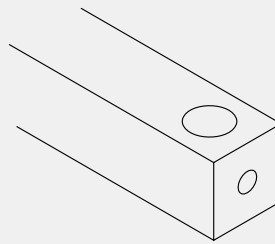
Side Profile



Front Profile



Isometric View



Visit www.coastal-group.com for CAD drawings

FINISHES:



PART NUMBER	PRODUCT DESCRIPTION	FINISH	UNITS
SW6	40 x 218mm Steel weight 6lb/2.7kg	-	Each
SW7	40 x 255mm Steel weight 7lb/3.2kg	-	Each
SW8	40 x 290mm Steel weight 8lb/3.6kg	-	Each
SW9	40 x 325mm Steel weight 9lb/4.1kg	-	Each
SW10	40 x 363mm Steel weight 10lb/4.5kg	-	Each
SW11	40 x 392mm Steel weight 11lb/5kg	-	Each
SW12	45 x 348mm Steel weight 12lb/5.4kg	-	Each
SW13	45 x 377mm Steel weight 13lb/5.9kg	-	Each
SW14	45 x 406mm Steel weight 14lb/6.3kg	-	Each
SW15	45 x 435mm Steel weight 15lb/6.8kg	-	Each
SW16	45 x 464mm Steel weight 16lb/7.3kg	-	Each
SW17	45 x 493mm Steel weight 17lb/7.7kg	-	Each
SW18	45 x 522mm Steel weight 18lb/8.2kg	-	Each
SW19	45 x 551mm Steel weight 19lb/8.6kg	-	Each
SW20	45 x 580mm Steel weight 20lb/9.1kg	-	Each
SW21	45 x 609mm Steel weight 21lb/9.5kg	-	Each
SW22	45 x 638mm Steel weight 22lb/10kg	-	Each
SW23	45 x 667mm Steel weight 23lb/10.4kg	-	Each

PART NUMBER	PRODUCT DESCRIPTION	FINISH	UNITS
SW24	50 x 560mm Steel weight 24lb/10.9kg	-	Each
SW25	50 x 585mm Steel weight 25lb/11.3kg	-	Each
SW26	50 x 598mm Steel weight 26lb/11.8kg	-	Each
SW27	50 x 620mm Steel weight 27lb/12.2kg	-	Each
SW28	50 x 650mm Steel weight 28lb/12.7kg	-	Each
SW29	50 x 680mm Steel weight 29lb/13.2kg	-	Each
SW30	50 x 695mm Steel weight 30lb/13.6kg	-	Each
SW31	50 x 725mm Steel weight 31lb/14.0kg	-	Each
SW32	50 x 752mm Steel weight 32lb/14.5kg	-	Each
SW33	50 x 772mm Steel weight 33lb/14.9kg	-	Each



COASTAL

Shaping the future.