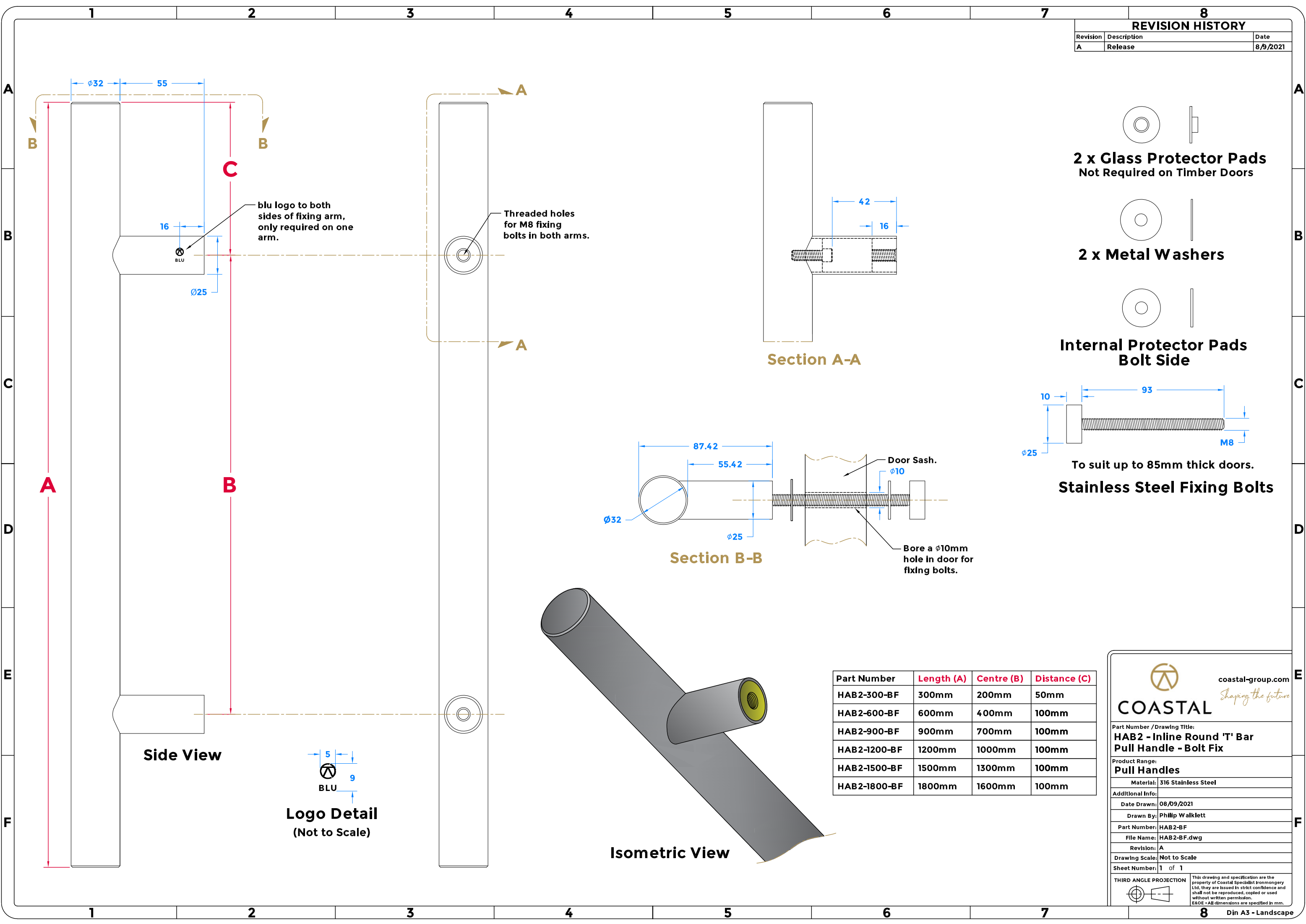


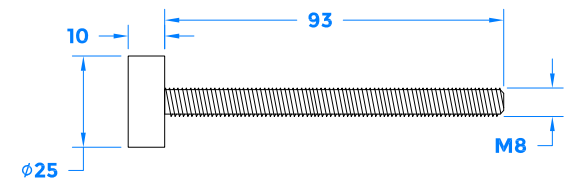
REVISION HISTORY		
Revision	Description	Date
A	Release	8/9/2021



2 x Glass Protector Pads
Not Required on Timber Doors

2 x Metal Washers

Internal Protector Pads Bolt Side



To suit up to 85mm thick doors.
Stainless Steel Fixing Bolts

Part Number	Length (A)	Centre (B)	Distance (C)
HAB2-300-BF	300mm	200mm	50mm
HAB2-600-BF	600mm	400mm	100mm
HAB2-900-BF	900mm	700mm	100mm
HAB2-1200-BF	1200mm	1000mm	100mm
HAB2-1500-BF	1500mm	1300mm	100mm
HAB2-1800-BF	1800mm	1600mm	100mm

 **COASTAL** coastal-group.com
Shaping the future

Part Number / Drawing Title:
HAB2 - Inline Round 'T' Bar Pull Handle - Bolt Fix

Product Range:
Pull Handles

Material: 316 Stainless Steel

Additional Info:

Date Drawn: 08/09/2021
Drawn By: Phillip Walklett

Part Number: HAB2-BF
File Name: HAB2-BF.dwg

Revision: A

Drawing Scale: Not to Scale

Sheet Number: 1 of 1

THIRD ANGLE PROJECTION 

This drawing and specification are the property of Coastal Specialist Ironmongery Ltd, they are issued in strict confidence and shall not be reproduced, copied or used without written permission.
EAOE - All dimensions are specified in mm.