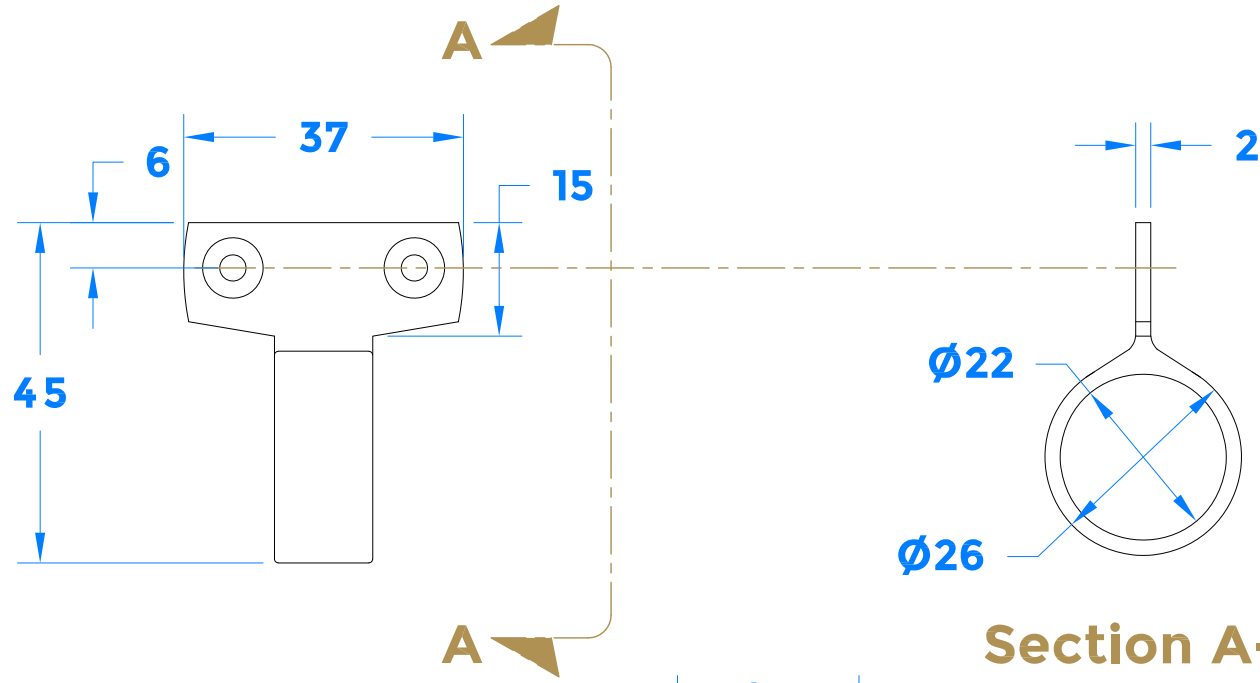


Drawing Revision History		
Revision	Description / Change	Date
A	Release	15/11/2021



**Section A-A**

 <b>COASTAL</b>		coastal-group.com <i>Shaping the future.</i>
Part Number / Drawing Title:		
<b>GL10</b>		
<b>Sash Ring</b>		
Product Range:		
<b>Sliding Sash Hardware</b>		
Material:	Brass	
Additional Info:	Side Plate Fix	
Date Drawn:	15/11/2021	
Drawn By:	Phillip Walklett	
Part Number:	GL10	
File Name:	GL10.dwg	
Revision:	A	
Drawing Scale:	1:1@ A4	
Sheet Number:	1 of 1	
THIRD ANGLE PROJECTION		
<small>This drawing and specification are the property of Coastal Specialist Ironmongery Ltd, they are issued in strict confidence and shall not be reproduced, copied or used without written permission.          E&amp;OE - All dimensions are specified in mm.</small>		