

# FLUSH BOLTS

Product Code: CWW360

LIT-DC-CWW360



## Door Hardware Range

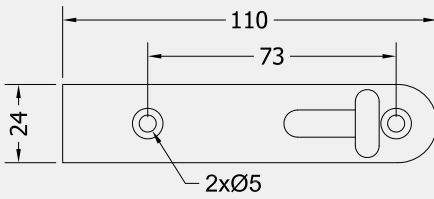
- A neat, discreet, small flush bolt
- Often used in various straight sliding and folding door systems
- Manufactured from brass



**COASTAL**

*Shaping the future.*

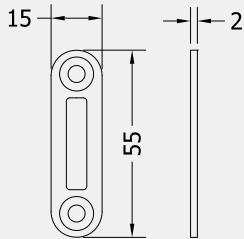
Front Profile Open Position



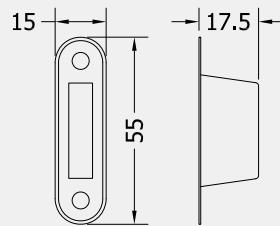
Front Profile Closed Position



Keep Front & Side Profile



Pocket Front & Side Profile



Visit [www.coastal-group.com](http://www.coastal-group.com) for CAD drawings

**FINISHES:**



**NK**  
Nickel



**PN**  
Polished Nickel



**PPB**  
PVD Polished Brass

PART NUMBER	PRODUCT DESCRIPTION	FINISH	UNITS
CWW360-NK	110 x 24mm Flush bolt	<b>NK</b>	Each
CWW360-PN	110 x 24mm Flush bolt	<b>PN</b>	Each
CWW360-PPB	110 x 24mm Flush bolt	<b>PPB</b>	Each



**COASTAL**

*Shaping the future.*