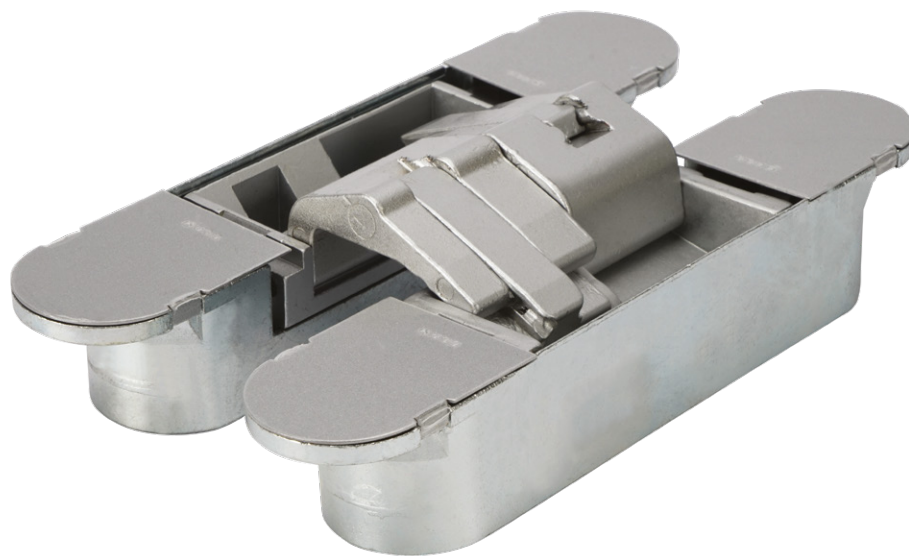


3D CONCEALED ADJUSTABLE HINGE

Product Code: CH1131

LIT-DC-CH1131



304 Grade Stainless Steel Hardware Range

- 3D concealed adjustable hinge
- Used on flush-faced, unrebated doors
- Recesses into door and frame so hinge cannot be seen when door is closed
- 3-way adjustment
- Adjustment screws concealed by cover plates
- Enables door to open to approx 180 degrees
- CH1131 Fire resistant to 60min

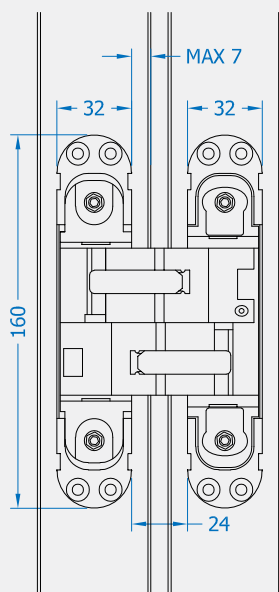


COASTAL

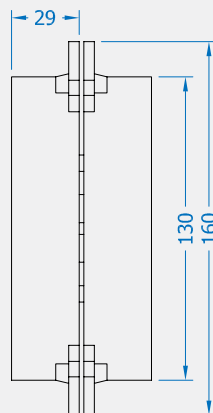
Shaping the future.

3D CONCEALED ADJUSTABLE HINGE

Front Profile



Side Profile



Visit www.coastal-group.com for CAD drawings

FINISHES:



SV

Silver Passivated

PART NUMBER	PRODUCT DESCRIPTION	FINISH	UNITS
CH1131-SV	160 x 32mm 3D Concealed hinge	SV	Each

Weight capacity

Sash width 850mm, up to 2100mm high

80kg using 2 hinges

120kg using 3 hinges

Sash over 2100mm high

120kg using 4 hinges



COASTAL

Shaping the future.