

# *Standard Automatic Multipoint Lock for Heritage Doors*

ML80R/86R Heritage Door Lock

T 01726 871 025 E [sales@coastal-group.com](mailto:sales@coastal-group.com) W [coastal-group.com](http://coastal-group.com)  
© Coastal Specialist Ironmongery Ltd



**COASTAL**

*Shaping the future.*

## HERITAGE STANDARD AUTOMATIC MULTIPOINT DOOR LOCK

### TECHNICAL INFORMATION:

- 92mm Euro Lock Centre
- 45 or 55mm Backset options
- Universal Lock Handing  
(Latch Release)

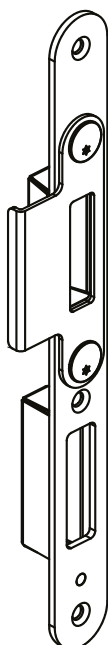


### FEATURES:

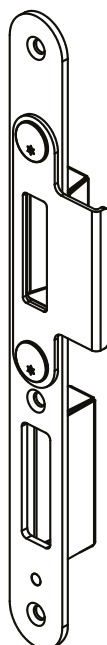
- Heritage standard multipoint automatic 'slam shut' door lock from Winkhaus
- Provides a traditional heritage look with the cylinder located approx at shoulder height on the door
- Can be used with either a cylinder pull or a pull handle and thumbturn cylinder
- Solid anti 'push back' hook bolts automatically trigger and lock upon shutting the door
- High performance, strengthened gearbox
- Tested to PAS24 and Secured by Design Approved

**Keep Handing** (as viewed from outside)

Left Hand Lock



Right Hand Lock



## HERITAGE STANDARD AUTOMATIC MULTIPOINT DOOR LOCK

## KIT CODES

KIT PART NUMBER	HANDING	BACKSET	FACEPLATE	CENTRE	FINISH	UNITS
ML80R-KIT-45-33-LH	Left	45mm	20mm Radius	33mm	SV	Each
ML80R-KIT-45-33-RH	Right	45mm	20mm Radius	33mm	SV	Each
ML80R-KIT-55-33-LH	Left	55mm	20mm Radius	33mm	SV	Each
ML80R-KIT-55-33-RH	Right	55mm	20mm Radius	33mm	SV	Each
ML86S-KIT-55-33-LH	Left	55mm	20mm Radius	33mm	SV	Each
ML86S-KIT-55-33-RH	Right	55mm	20mm Radius	33mm	SV	Each

Kit includes 1 x ML80R multipoint lock, 1 x MK9 Centre keep and 2 x MK7-TAB keeps

## COMPONENT CODES

LOCK PART NUMBER	HANDING	BACKSET	FACEPLATE	FINISH	UNITS
ML80R-LH-45-SV	Left	45mm	20mm Radius End	SV	Each
ML80R-RH-45-SV	Right	45mm	20mm Radius End	SV	Each
ML80R-LH-55-SV	Left	55mm	20mm Radius End	SV	Each
ML80R-RH-55-SV	Right	55mm	20mm Radius End	SV	Each
ML86S-LH-35-SV	Left	35mm	16mm Radius End	SV	Each
ML86S-RH-35-SV	Right	35mm	16mm Radius End	SV	Each
ML86S-LH-45-SV	Left	45mm	16mm Radius End	SV	Each
ML86S-RH-45-SV	Right	45mm	16mm Radius End	SV	Each
ML86S-LH-55-SV	Left	55mm	16mm Radius End	SV	Each
ML86S-RH-55-SV	Right	55mm	16mm Radius End	SV	Each

## KEEP CODES

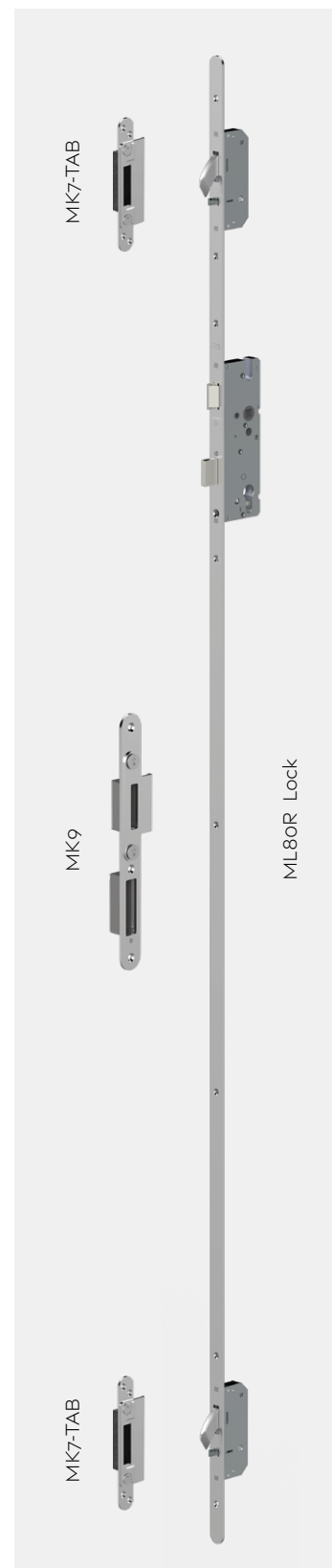
KEEP PART NUMBER	PRODUCT DESCRIPTION	HANDING	CENTRE	FINISH	UNITS
MK7-FTB-TAB-28-AAL	Non-adjust single keep	Universal	28mm	SV	Each
MK9-FTB-28-AAL	Non-handed premium flush centre keep	Universal	28mm	SV	Each
MK7-TAB-28-SV	Single keep	Universal	28mm	SV	Each
MK7-TAB-33-SV	Single keep	Universal	33mm	SV	Each
MK9-28-LH-SV	Centre keep	Left	28mm	SV	Each
MK9-28-RH-SV	Centre keep	Right	28mm	SV	Each
MK9-33-LH-SV	Centre keep	Left	33mm	SV	Each
MK9-33-RH-SV	Centre keep	Right	33mm	SV	Each

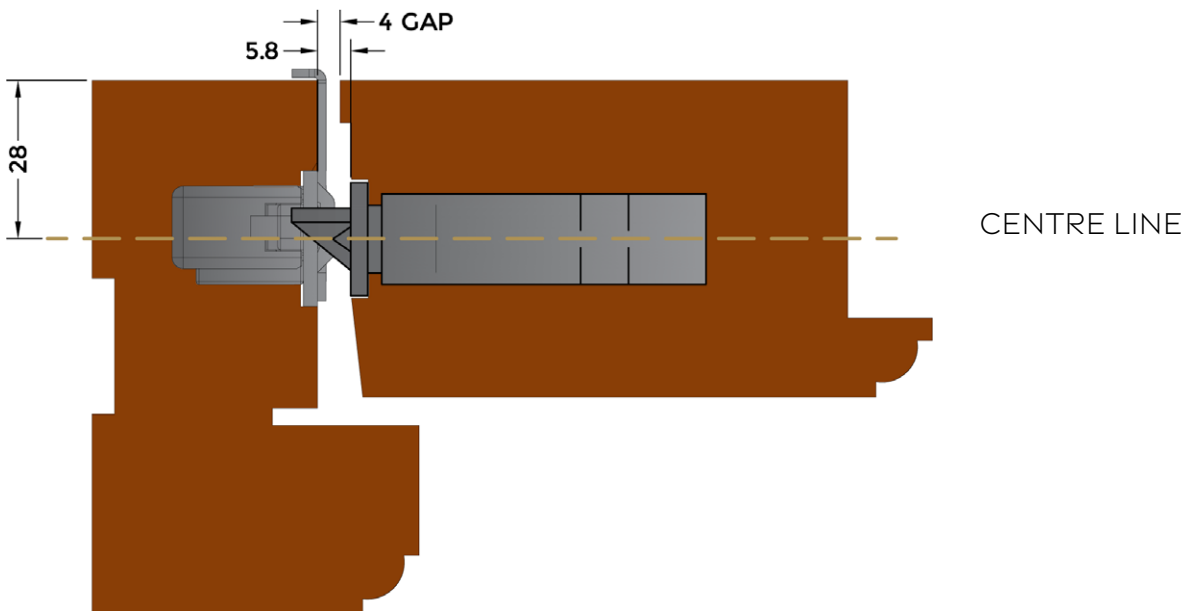
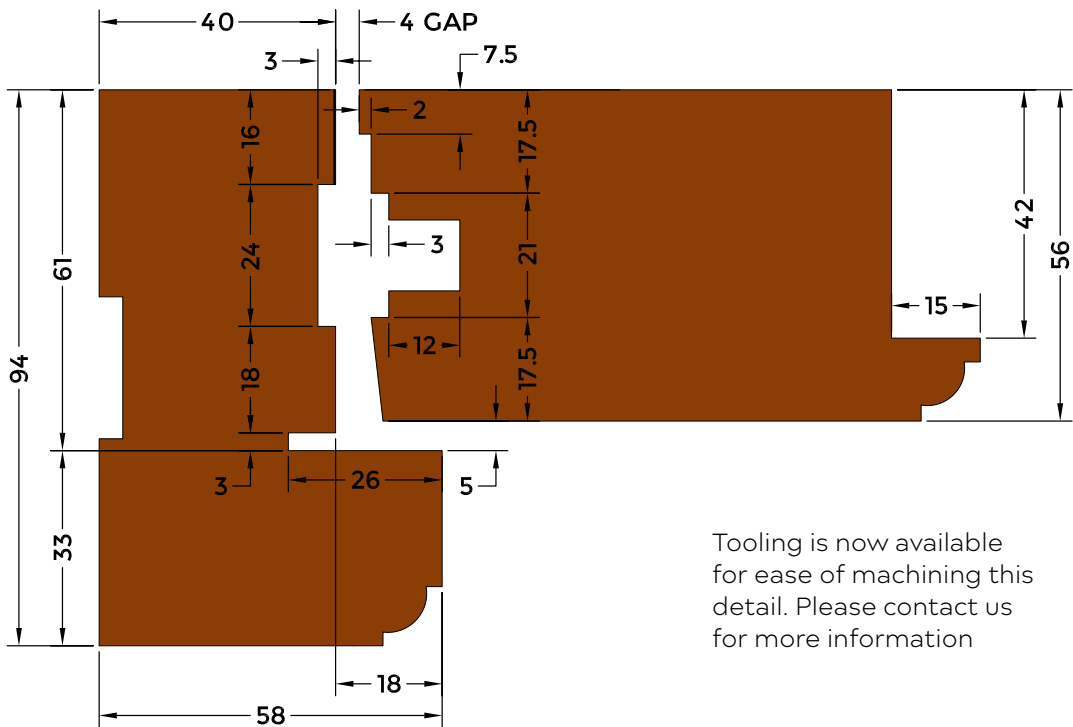
## FINISHES:



SV

Silver Passivated

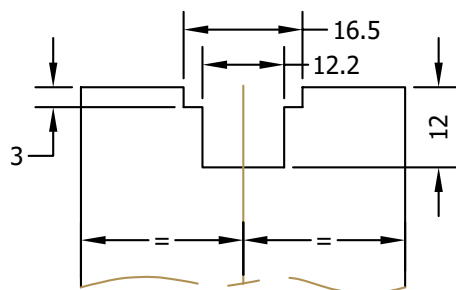




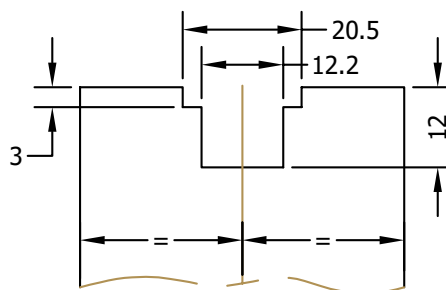
SECTION (REF ONLY)

## HERITAGE STANDARD AUTOMATIC MULTIPOINT DOOR LOCK

What are faceplate widths?



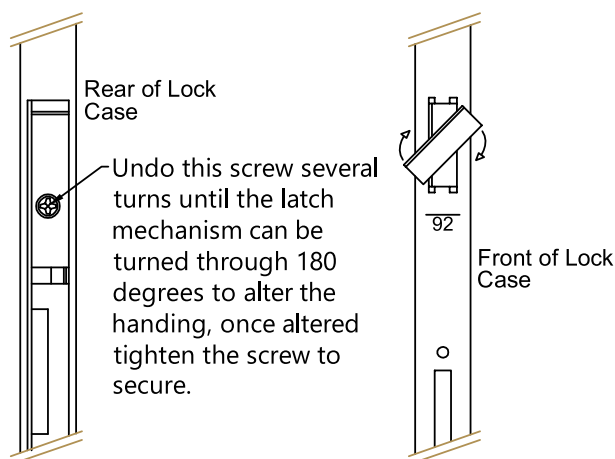
SECTION A-A  
EURO GROOVE



SECTION A-A  
EURO GROOVE

- Typical faceplate widths are 16mm or 20mm, this is measured across the face of the lock
- The diagram above shows typical routing detail

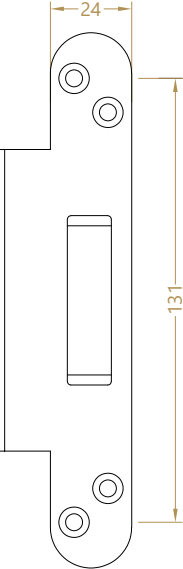
How to release the latch on a non-handled (universal) multipoint lock



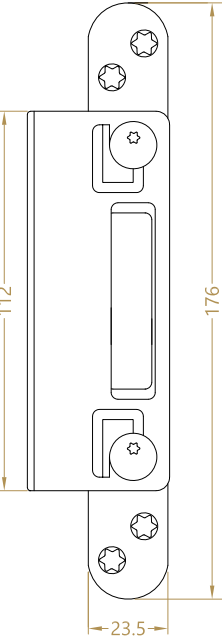
Detail A  
Latch Release



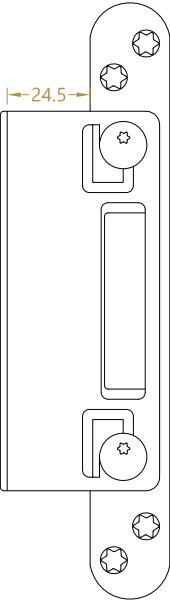
MK7-FTB-TAB



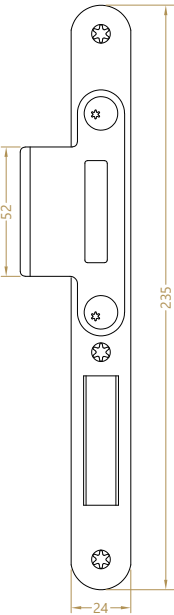
MK7-TAB-28



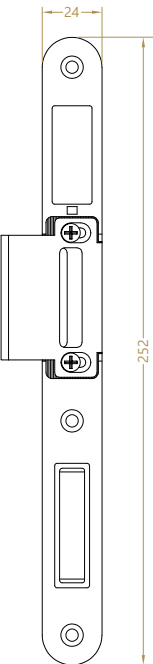
MK7-TAB-33



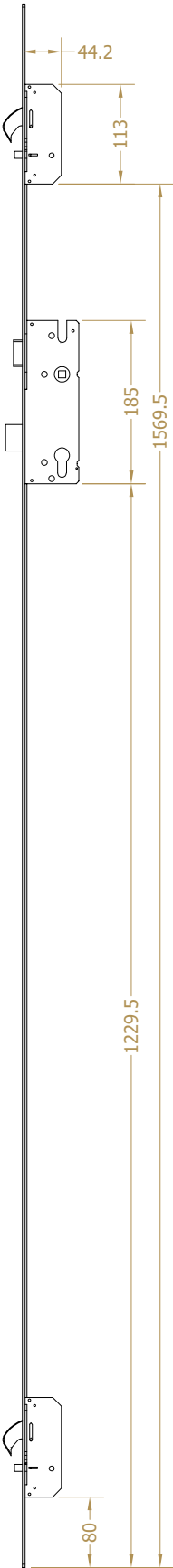
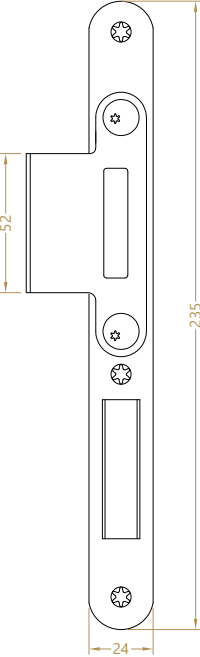
MK9-28-SV



MK9-FTB-28



MK9-33-SV



## MAINTENANCE AND LUBRICATION GUIDE

---

Winkhaus locking systems are put through very stringent tests to meet the requirements of today's environment, including cycle testing.

The current requirement for PAS 23/24 is 50,000 full cycles of the door-set in order to simulate 10 years average use.

The requirement for maintenance is totally dependent on usage and environment, i.e. In areas of high dust or corrosive atmospheres, the requirement for lubrication will be more frequent than normal.

We therefore recommend that a light application of our GLS200 Lubricant Spray be used into the apertures of the hooks, dead-bolt and latch and into both sides of the cylinder. In normal usage Bi-annual application would be more than sufficient.

To prevent any damaging effect to the corrosion protection of Winkhaus fittings, only PER neutral cleaning and care agents should be used, which do not contain any abrasives.

We also strongly recommend that the door set is checked over for any movement, swelling or distortion of either sash or frame, if necessary check for debris of any kind interfering with any of the moving parts behind the mechanism itself. This operation will require the mechanism to be removed and replaced by a competent person. Any loose or missing fixing screws should be tightened or replaced as required.

Under no circumstances should any aspect of the lock or cylinder be tampered with in any way, as this may affect both the serviceable life and guarantee.

