

PLASTIC RECESSED CLIP-FIX TRICKLE VENT

Product Code: TVA283-389

LIT-DC-TVA283-389



Trickle Ventilators & Canopies Range

- TVA semi-recessed plastic clip-fix trickle vent
- Specifically designed for high performance timber windows
- Complies with Building Regulations, Ventilation (England & Wales)
- Press to open or close
- Provides high air tightness in closed position
- Should be fitted with the TVA Canopy to achieve the EA Air Flow figures
- Installed on the inside of the window
- Timber veneer covers are available for these vents - see Part Numbers TVT242, TVT347



COASTAL

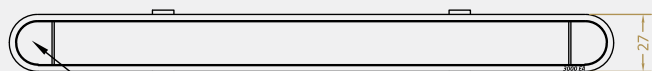
Shaping the future.

TVA283

Front Profile

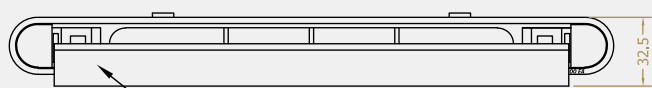


Side Profile



Press down here on both sides to release the centre flap

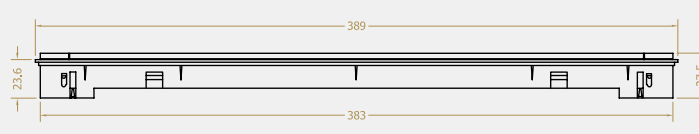
Side Profile (Open Position)



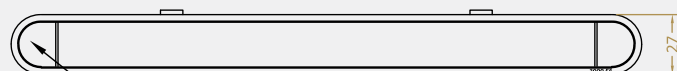
Press this inwards to close the centre flap

TVA389

Front Profile

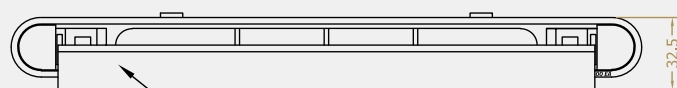


Side Profile



Press down here on both sides to release the centre flap

Side Profile (Open Position)



Press this inwards to close the centre flap

Visit www.coastal-group.com for CAD drawings

FINISHES:



WH
White



BR
Brown

PART NUMBER	PRODUCT DESCRIPTION	FINISH	UNITS
TVA283-WH	283 x 27mm Vent, EA - 3000mm ²	WH	Each
TVA283-BR	283 x 27mm Vent, EA - 3000mm ²	BR	Each
TVA389-WH	389 x 27mm Vent, EA - 4300mm ²	WH	Each
TVA389-BR	389 x 27mm Vent, EA - 4300mm ²	BR	Each

Should be fitted with TVA Canopy to achieve EA Air Flow Figures

PART NUMBER	EQUIVALENT AREA (EA) AIR FLOW	FREE AREA
TVA283	3000mm ²	3616mm ²
TVA389	4300mm ²	4800mm ²

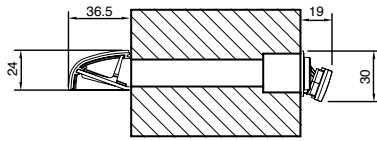


COASTAL

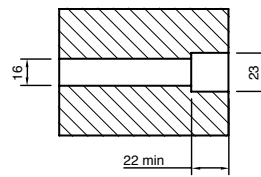
Shaping the future.

PLASTIC RECESSED CLIP-FIX TRICKLE VENT

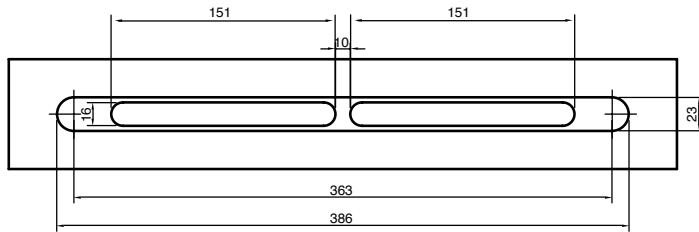
Section through slot



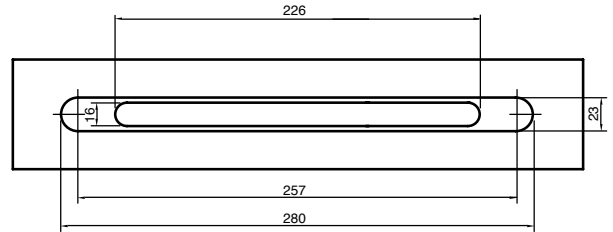
Recess for ventilator



Slot details - TVA389



Slot details - TVA283



INSTRUCTIONS:

1. Prepare round ended slots accurately. Avoid glazing rebates
2. Use sealant around the base of the vent for improved performance
3. Push fix vent into timber window or door profile
4. To ensure the vent is fitted the right way up, please look for the mark situated on the front at one end of the vent. This marker indicates the top of the vent

NOTE:

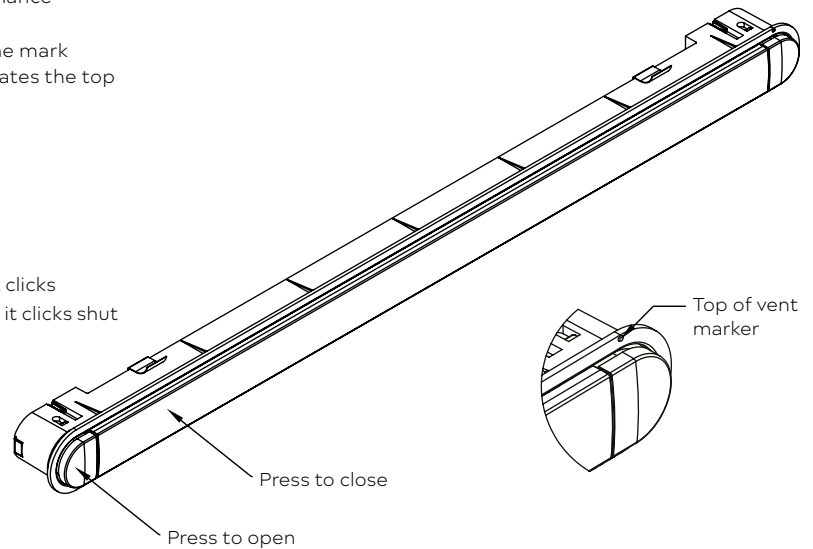
Vent is push fitted into timber frame with pre-fitted clips x4

OPERATION:

Open vent by pressing the buttons at the far ends of the vent until it clicks
 Close vent by pressing the vent at the ends of the open section until it clicks shut

MAINTENANCE:

1. Wipe Ventilator (and Canopy if accessible) clean with a damp cloth. Frequency will depend on local conditions
2. Clean away blockages with a soft brush
3. Do not lubricate



COASTAL

Shaping the future.