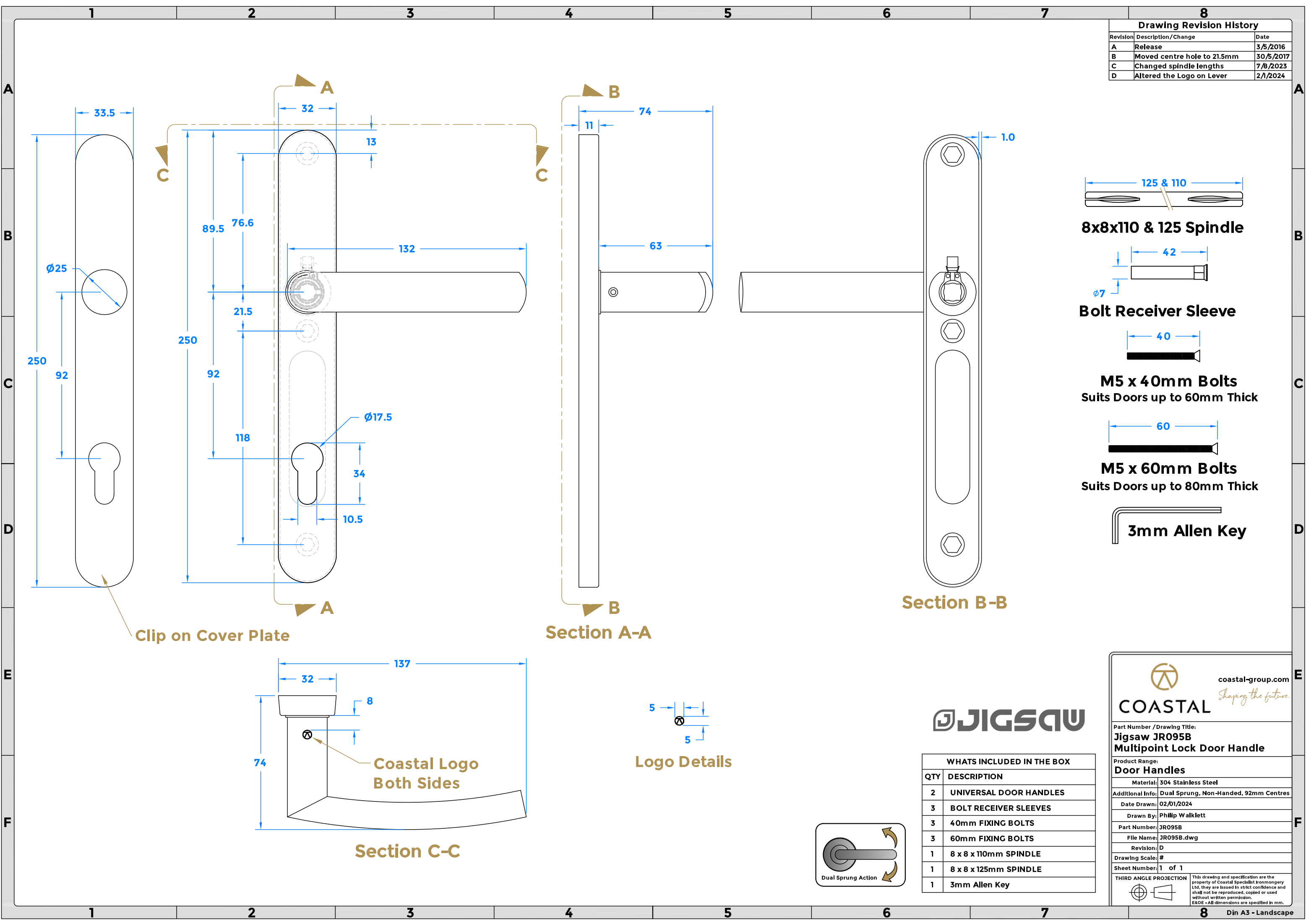
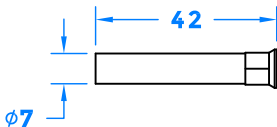


Drawing Revision History		
Revision	Description/Change	Date
A	Release	3/5/2016
B	Moved centre hole to 21.5mm	30/5/2017
C	Changed spindle lengths	7/8/2023
D	Altered the Logo on Lever	2/1/2024



8x8x110 & 125 Spindle



Bolt Receiver Sleeve



M5 x 40mm Bolts
Suits Doors up to 60mm Thick



M5 x 60mm Bolts
Suits Doors up to 80mm Thick



3mm Allen Key

Section B-B

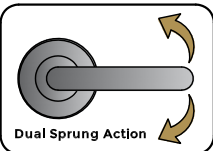
Section A-A

Section C-C

Logo Details



WHATS INCLUDED IN THE BOX	
QTY	DESCRIPTION
2	UNIVERSAL DOOR HANDLES
3	BOLT RECEIVER SLEEVES
3	40mm FIXING BOLTS
3	60mm FIXING BOLTS
1	8 x 8 x 110mm SPINDLE
1	8 x 8 x 125mm SPINDLE
1	3mm Allen Key





coastal-group.com
Shaping the future.

COASTAL

Part Number / Drawing Title:
Jigsaw JR095B
Multipoint Lock Door Handle

Product Range:
Door Handles

Material: 304 Stainless Steel

Additional Info: Dual Sprung, Non-Handed, 92mm Centres

Date Drawn: 02/01/2024

Drawn By: Philip Walklett

Part Number: JR095B

File Name: JR095B.dwg

Revision: D

Drawing Scale: #

Sheet Number: 1 of 1

THIRD ANGLE PROJECTION

This drawing and specification are the property of Coastal Specialist Ironmongery Ltd, they are issued in strict confidence and shall not be reproduced, copied or used without written permission.
E&OE - All dimensions are specified in mm.