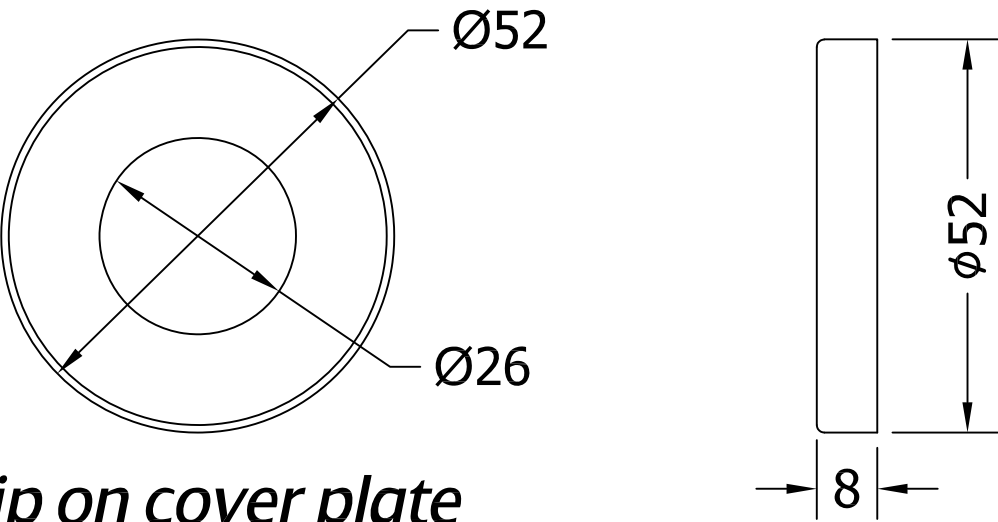
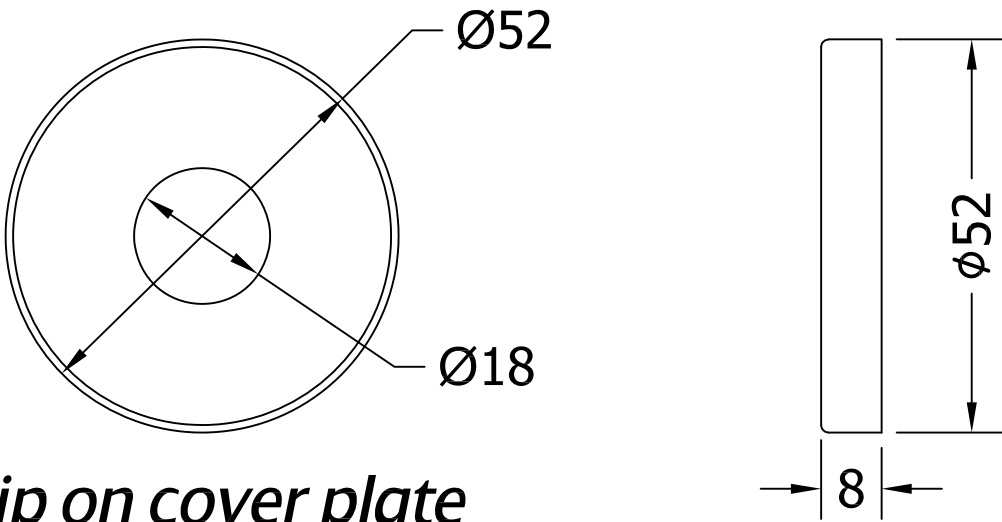


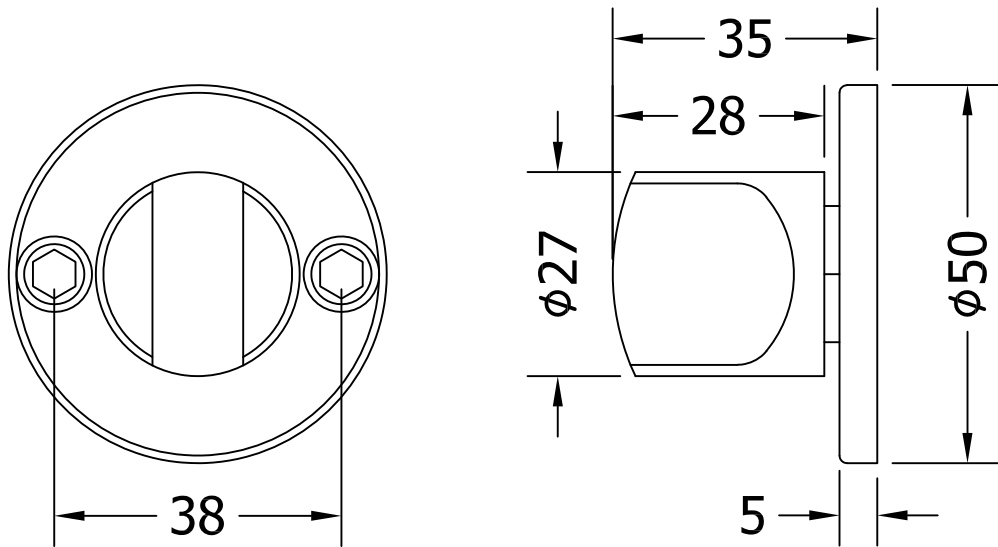
REVISIONS			
Revision	Description	Drawn	Date
A	Release	PW	27/02/18



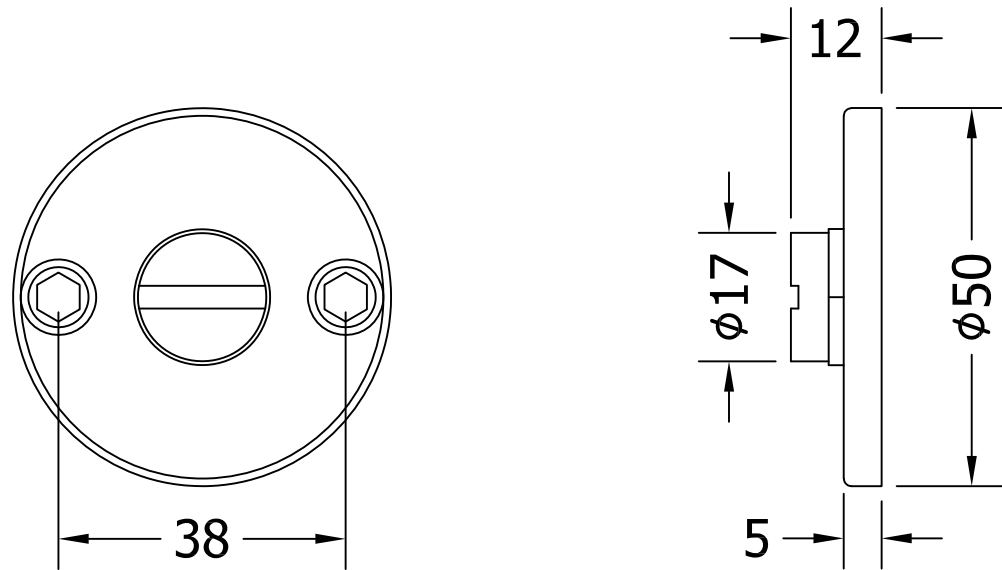
Clip on cover plate



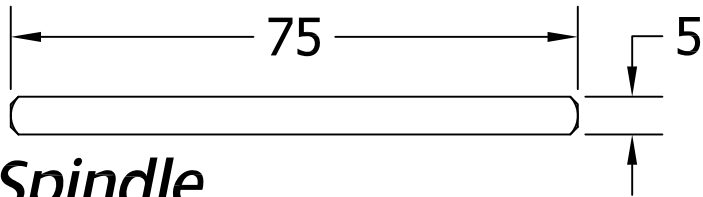
Clip on cover plate



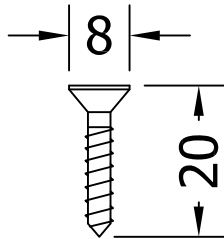
Internal Thumbturn



External Release



Spindle



	
Global House, Bojea Industrial Estate, Trethowel, St Austell, PL25 5RJ Telephone 01726 871725 - Fax 01726 871731 Email sales@coastal-group.com - Web www.coastal-group.com	
Drawing Reference:	
Coastal Group	
Drawing Title:	
CLR361-39-SSS	
Bathroom Turn & Release Set	
Product Range:	
Door Furniture	
Additional Info:	
Standard Thumbturn	
Date Drawn:	27/02/2018
Drawn By:	Phil Walklett
Part Number:	CLR361-39-SSS
File Name:	CG-CLR361-39.dwg
Revision:	A
Drawing Scale:	1:1 @ A3
Sheet Number:	1 of 1
THIRD ANGLE PROJECTION	
This drawing and specification are the property of Coastal Group, they are issued in strict confidence and shall not be reproduced, copied or used without written permission.	